

Technical Service Bulletin #23007

SP7 Guide Arm Latch Adjustment



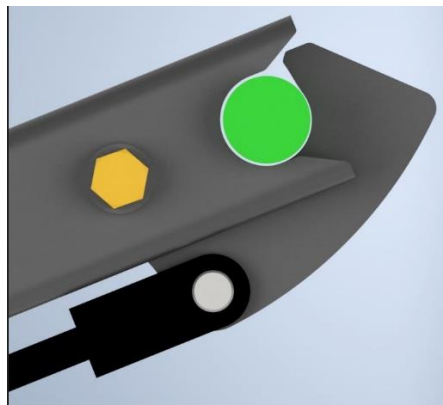
June 2023

Affected Products: *Solid Pull Super 7 Harrow*

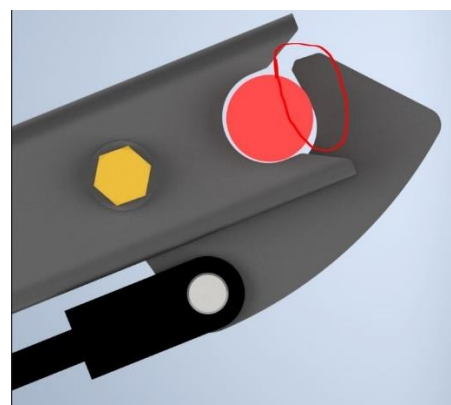
Summary: latch adjustment instructions

Resolution:

When latched, the guide arm should be centered (or inwards) in the latch plate (see Fig.1 below), and not contacting the outer edge of the latch plate (as seen in Fig.2 below).



Correct Latching (Fig.1)



Incorrect Latching (Fig.2)

Contacting the outside edge of the plate may increase the pressure on the latching system. If not centered, the latch plate should be adjusted by turning the clevis on the latching cylinder (see Fig.3 below) until the guide arm is centered (as in Fig.1).



Fig.3

For any questions on the above information please contact our Product Support Department at:



support@elmersmfg.com



1-204-324-6263