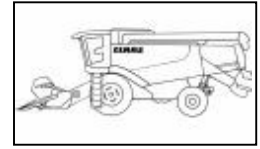


Service & Parts

Information

CLAAS Omaha Technical Support , 03/24/2016 RW



Type of Info: General
Group: 10
CLAAS No.: 13054

LEXION 500 and 700 Series

Chassis Ground Cable; Identification and Maintenance

NOTE: Service information Bulletins **DO NOT** constitute warranty authorization to update units. This is for informational purposes only.

MACHINES LEXION 500 and 700 series

AFFECTED:

INFORMATION: To ensure the reliability of the electrical system on the machine, a proper chassis ground connection is necessary. See attached information which identifies the location of the chassis ground cables, as well as important inspection points.



SERVICE & PARTS

The latest version of the chassis ground connection includes the following parts:

2 - Earth Tape	- 014 658.2
4 - Hex Bolt	- 217 363.0
4 - Contact Washer	- 032 555.0

Park the machine and secure it so that it cannot move. Remove the battery disconnect key.

On the LEXION, there will be chassis ground cables located in two locations (A) and (B).



Figure: 1.1

To locate chassis ground cable (A), open LH side panel in order to access the sidewall of the machine. Chassis ground cable (A) is located in the indicated position.



Figure: 1.2

In order to maintain a proper ground connection, the following points are necessary:

- The surface of ground cable mounting point (C) must be free of paint, rust or corrosion. If necessary, clean the surface of terminal (C). The mounting surface must remain flat during this process.



Figure: 1.3

- The strap must be mounted securely.
Torque of bolt = 48.5 Nm (36 ft-lbs)

The inspection points described above are important for both mounting locations for the ground cable (D).

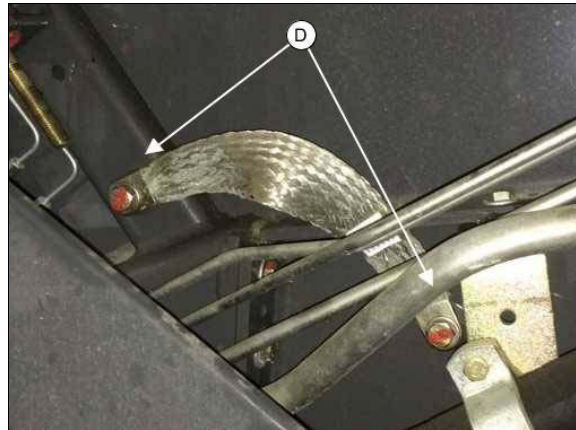


Figure: 1.4

The location of chassis ground cable (B) is shown.

All inspections points for point (A) which were previously described, need to be applied to point (B).

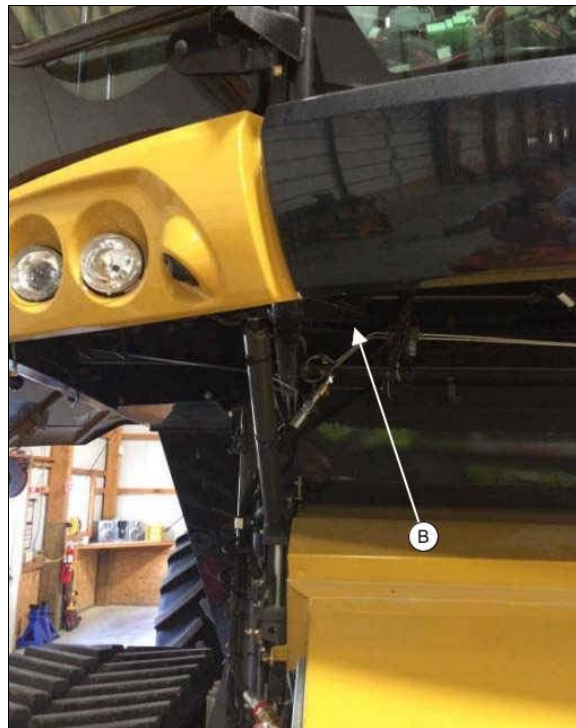
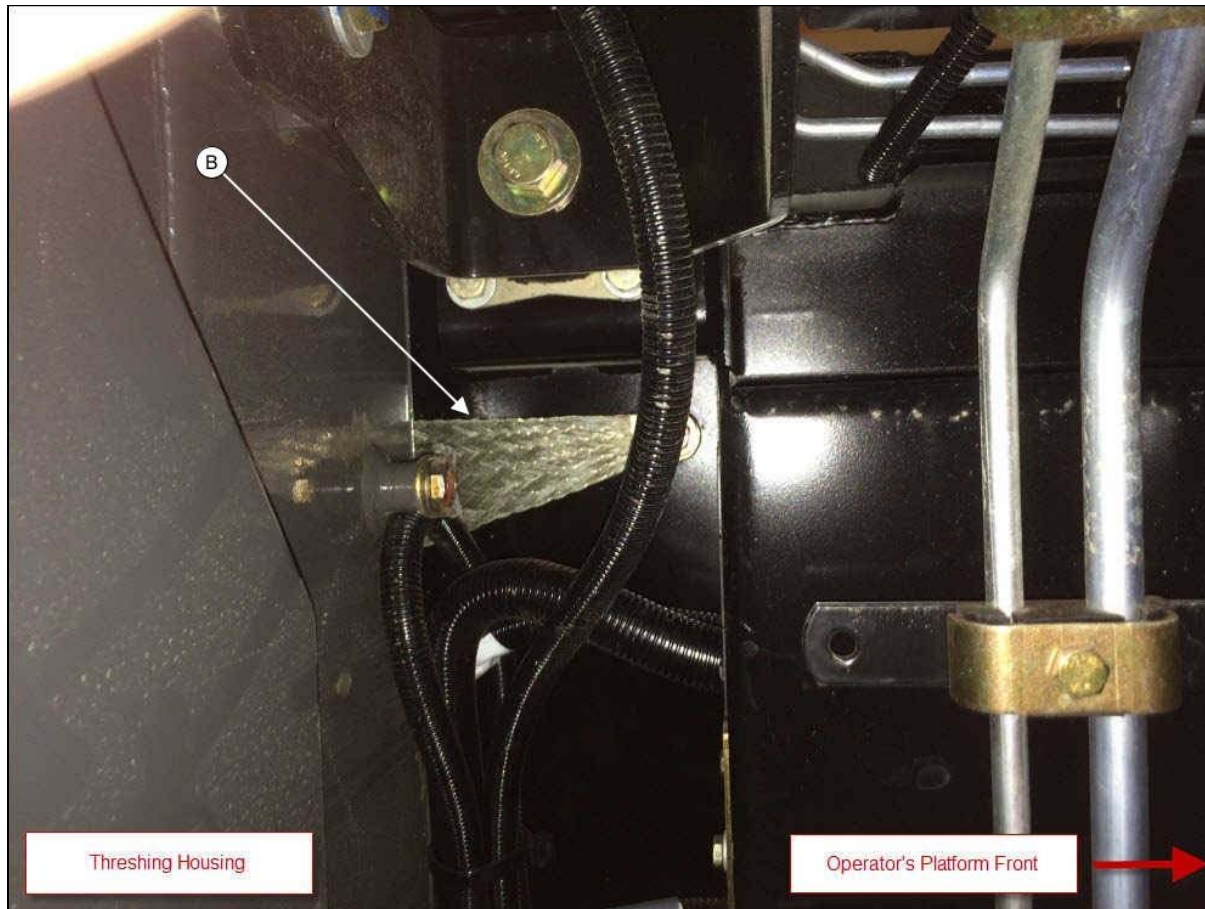


Figure: 1.5

**Figure: 1.6**

Complete the machine and carry out a test run.

Clear all personnel from the machine and from the area. Check for proper operation of all controls while you operate the machine slowly in an open area. Refer to the Operation and Maintenance manual for additional operation and safety information.

NOTE: Properly maintained chassis ground cable connections are necessary to ensure a properly functioning electronic system on the machine.