

04 May 2015

To: All TPA Dealers

Service Bulletin #15SB15005

Re: X25 compass calibration issue

From: Topcon Precision Agriculture

Description

X25/AGI-4 firmware is causing "Receiver Disconnect Error" to appear on X25 while trying to complete a compass calibration.

Symptoms/Units Affected

Units affected are fitted to AGCO machines where the X25 console is connected to serial port A on the AGI-4. The AGI-4 outputs debug messages on port A when the compass calibration is started and stopped. This causes a communication issue "Receiver Disconnect" resulting in a compass calibration failed error message being reported to the user after compass calibration is complete. The affected software is version 3.18.210.

Workaround

The following GRIL command can be utilized to fix the problem on customer machines:

```
%%set,/par/mc/tp/oport,/dev/null
```

Solution

Engineering has addressed the issue and it will be corrected in the 4.5Y14 AGI-4 firmware.

Workaround Methods (TRU/X25)

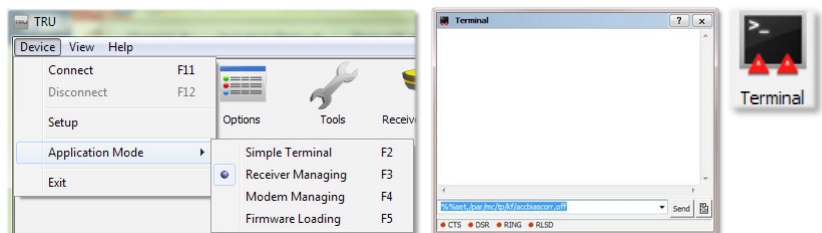
This workaround can be accomplished by connecting a PC to the serial port of the AGI-4 receiver. Connect to the receiver by using TRU to manually send the GRIL command. Use the diagnostic cable AGA5427 for AGI-4 serial connections. These GRIL commands can also be executed by entering 3.18 Technician mode on X25.

TRU Software Method

- Once connected through "Receiver Managing"
- Go to "Terminal" and type script

```
%%set,/par/mc/tp/oport,/dev/null
```

in the bottom of the screen and send
- Then close "Terminal" screen
- Go into "Tools" and complete a "Factory Reset" (NVRAM Clear)
- Completed



AG | RX

X25 Technician Mode

- Go to the X25 setting menu and select User/Access Level



- Choose "Technician Mode" and enter the correct password
(Please contact [Topcon Support Line](#))
- Go to System/GPS/Advanced Settings



- Choose Send Command and enter the GRIL command
`%%set,/par/mc/tp/oport,/dev/null`
- Select the green check mark
- Return to User/Access Level and choose "User" as the access level
- Completed
- Please Note: The user level will return to "User" access level after the next X25 power cycle