

CLAAS of America Inc.
Parts Distribution Center
3030 Norcross Drive
Columbus, IN 47201
www.claasofamerica.com
COA 3070 (2/14) English
CL99993070

LEXION
770 760 750 740 730
670

CLAAS

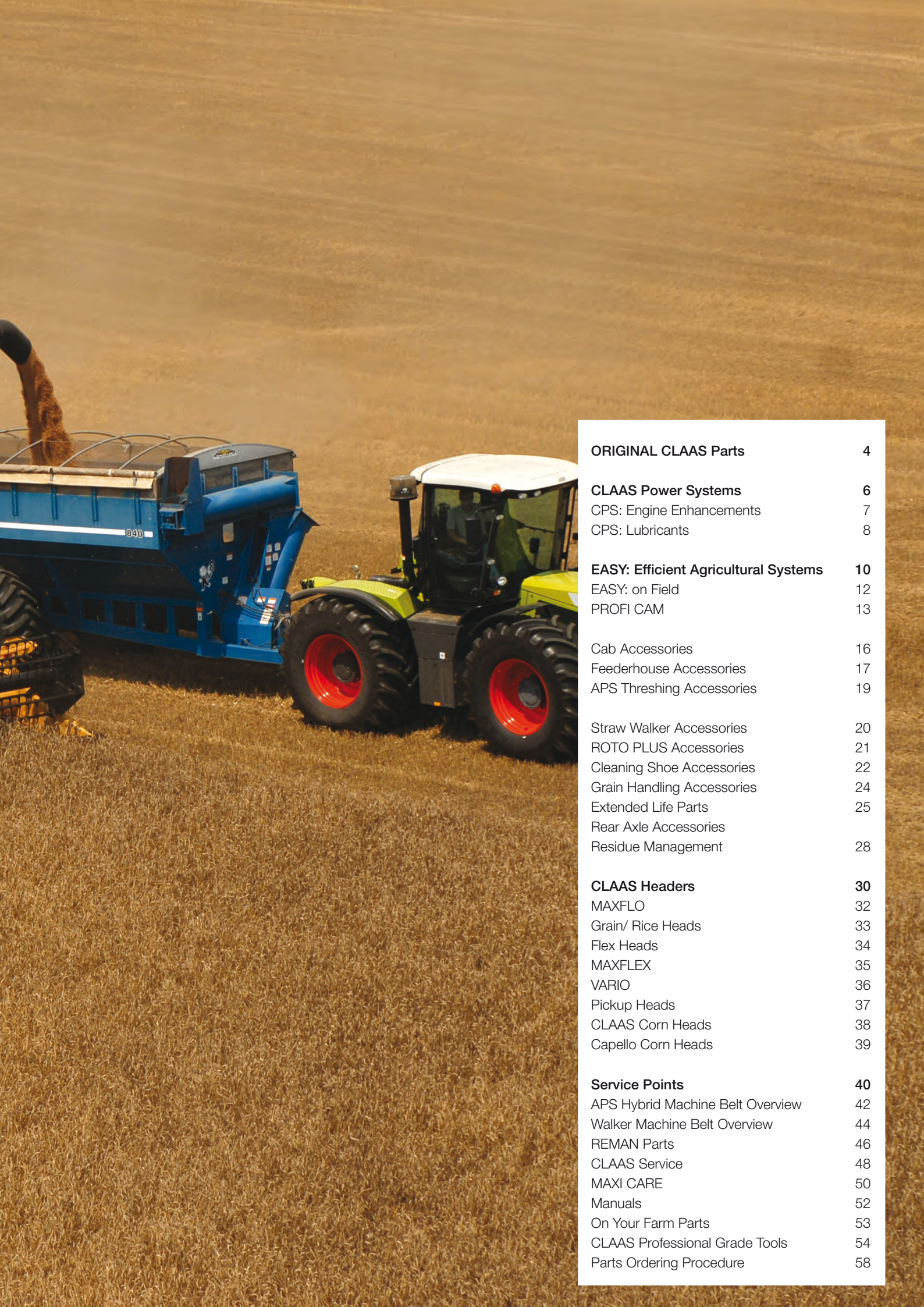
Serial Number Type C49,C48,C44 Only

LEXION After Sales Parts



The benchmark
for a new class





ORIGINAL CLAAS Parts	4
CLAAS Power Systems	6
CPS: Engine Enhancements	7
CPS: Lubricants	8
EASY: Efficient Agricultural Systems	10
EASY: on Field	12
PROFI CAM	13
Cab Accessories	16
Feederhouse Accessories	17
APS Threshing Accessories	19
Straw Walker Accessories	20
ROTO PLUS Accessories	21
Cleaning Shoe Accessories	22
Grain Handling Accessories	24
Extended Life Parts	25
Rear Axle Accessories	
Residue Management	28
CLAAS Headers	30
MAXFLO	32
Grain/ Rice Heads	33
Flex Heads	34
MAXFLEX	35
VARIO	36
Pickup Heads	37
CLAAS Corn Heads	38
Capello Corn Heads	39
Service Points	40
APS Hybrid Machine Belt Overview	42
Walker Machine Belt Overview	44
REMAN Parts	46
CLAAS Service	48
MAXI CARE	50
Manuals	52
On Your Farm Parts	53
CLAAS Professional Grade Tools	54
Parts Ordering Procedure	58

No compromises: ORIGINAL CLAAS Parts

100 % operational reliability.

Install only ORIGINAL CLAAS parts on your LEXION to ensure maximum operational reliability. That's because our parts are perfectly fitted, high quality production parts made using state-of-the-art technology in a continuous quality controlled process.



Beware of copies!

Essential wear parts are often copied. Sometimes they are even manufactured to the correct size. However, much more important are the materials used and the methods of production. These are the factors that determine the reliability and durability of the parts. For this reason, ORIGINAL CLAAS parts are exclusively manufactured from high quality materials and exactly to CLAAS specifications.

Using copied parts will not assure the safe and reliable operation of your LEXION, and can even result in failure and costly consequential damage. We would advise you not to take that risk because, after all, your business success during the harvesting season hangs on the performance and reliability of your LEXION.



Service included.

When it comes to replacement parts, not only quality but also availability are of utmost importance.

That is why at CLAAS we have established tightly integrated global service network in conjunction with our North American Dealer network. This means that your local CLAAS dealer always stocks all the essential parts you need.

In addition, our affiliated parts specialist and service technicians know all there is to know about ORIGINAL CLAAS parts, thus ensuring the quick and reliable replacement of parts even under time pressure. They prove this all year round, and especially during harvest season. Also they are there to serve you after hours, after all, you yourself will be working around the clock.



ORIGINAL CLAAS Parts

CPS: CLAAS Power Systems

CLAAS changed the industry when it introduced the LEXION Series of combine harvesters, the most efficient and versatile range of combine harvesters in the world. These workhorses are known worldwide for their combination of massive power and impressive fuel economy. How are these two seemingly opposite characteristics possible in one machine? They are the result of the CLAAS POWER SYSTEM (CPS), an approach to creating the most efficient, powerful and capable machines possible.

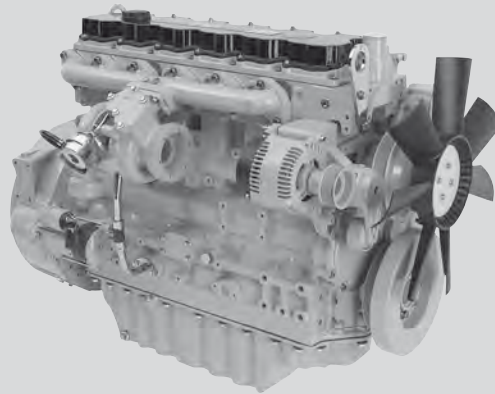
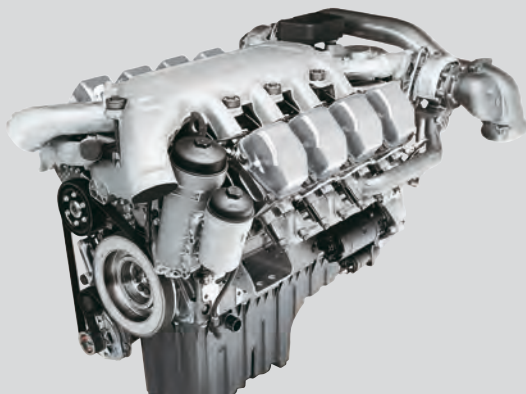
The CPS team is a group of experts from different disciplines and business sectors that work together to develop the best solutions in drive technology. The team is comprised of experienced specialists who focus on ensuring that the best engines, power train systems and other features are developed and sourced for each piece of CLAAS machinery.

Overall, the group works to develop not only the best systems for power generation, but also for power conversion and power usage. Finding the most efficient ways to turn engine power into throughput is at the very heart of this process for LEXION combine harvesters.

For the LEXION, the CPS process has included not only determining the most efficient engine to use for each model, but also targeting the hydraulic, drive technology and electronics. In addition, there's a constant focus on improving fuel economy.



CPS: Engine Enhancements



		770 / 770 TERRA TRAC C49	760 / 760 TERRA TRAC C49	750 / 750 TERRA TRAC C48	740 / 740 TERRA TRAC C48	730 C48	670 C44
Manufacturer		Mercedes Benz	Caterpillar	Caterpillar	Caterpillar	Caterpillar	Caterpillar
Model		OM 502 LA	C 13	C 13	C 9	C 9	C 9
Cylinders		V 8	Inline 6	Inline 6	Inline 6	Inline 6	Inline 6
Fuel consumption monitoring	P03 0090	****	****	****	****	****	****
Auxiliary fuel tank	P14 0115	794 919.0	794 919.0	794 919.0	794 919.0	794 919.0	-
Fuel tank locking cap		177 621.0	177 621.0	177 621.0	177 621.0	177 621.0	177 621.0
Ether starting assistance kit		-	509 852.0* Tier 3 235 0033.0* Tier 4i	509 852.0* Tier 3 235 0033.0* Tier 4i	509 853.0* Tier 3 235 0031.0* Tier 4i	509 853.0* Tier 3 235 0031.0* Tier 4i	509 853.0* Tier 3 235 0031.0 Tier 4i
Replacement bottle		-	505 002.0	505 002.0	505 002.0	505 002.0	505 002.0
Leaf shredder kit ²		1498 360.0	1498 360.0	1498 360.0	1498 360.0	1498 360.0	-
Rotary screen brush kit		-	-	-	798 906.2	798 906.2	798 906.2
Replacement brush		-	-	-	743 797.1	743 797.1	743 797.1
Rotary screen intake scoop kit ¹		-	-	352 712.0* Tier 3	352 712.0* Tier 3	352 712.0* Tier 3	-
CLEAN SWEEP internal brush kit ²		798 753.0	798 753.0	798 753.0	798 753.0	798 753.0	798 753.0
Dual air filter intake kit		1498175.0	1498 175.0	1498 175.0	-	-	-
Additional adapter kit		No additional kit required	1498 174.0 Tier 3 1498 469.0 Tier 4i	1498 174.0 Tier 3 1498 468.0 Tier 4i	-	-	-

*May require additional lead time

¹See Service information bulletin 11232 before ordering

²For machines equipped with CLEAN SWEEP

**** Contact CLAAS Technical Support for unlock code (402) 861-1000 option 3



Rotary screen brush kit



Ether starting assistance kit



Rotary screen intake scoop

CPS:
CLAAS Power Systems

CPS: Full power with lubricants by CLAAS

CLAAS lubricants.

- cover the entire range of CLAAS machinery
- can be used in all brands of machinery
- are tested and approved by the CLAAS Technical Development Department
- comply with all technical specifications, including the TIER 3 & 4 exhaust emission standards
- meet the rising demands on transmissions, axles, hydraulics and wet brakes
- ensure maximum operating reliability



Products	Designation
Engine oil	CLAAS AGRIMOT Mineral CLAAS ULTRATEC Semi-synthetic
Hydraulic oil	CLAAS AGRIHVD
Transmission oil	CLAAS AGRISHIFT
Antifreeze	CLAAS AGRI-COOL Premix
Lubricating grease	CLAAS AGRIGREASE



Product	Container Size	Part Number
Engine Oil		
AGRIMOT ULTRATEC 10w-40	5.2 US gal/20 Liter	147 483.0
AGRIMOT ULTRATEC 10w-40	Pallet of 40 5.2 US gal/20 Liter Jugs	CLPALLET1474830
AGRIMOT ULTRATEC 10w-40	55 US gal/208 Liter	147 482.0
AGRIMOT SDM 15W-40	5.2 US gal/20 Liter	147 459.0
AGRIMOT SDM 15W-40	Pallet of 40 5.2 US gal/20 Liter Jugs	CLPALLET147459.0
AGRIMOT SDX 15W-40	1.3 US gal/5 Liter	147 481.0
AGRIMOT SDX 15W-40	5.2 US gal/20 Liter	147 480.0
AGRIMOT SDX 15W-40	15.8 US gal/60 Liter	147 489.0
AGRIMOT SDX 15W-40	55 US gal/208 Liter	147 478.0
Hydraulic Oil		
AGRIHY HV 46	5.2 US gal/20 Liter	147 445.0
AGRIHY HV 46	Pallet of 40 5.2 US gal/20 Liter Jugs	CLPALLET1474450

Product	Container Size	Part Number
Gear/Transmission Oil		
AGRISHIFT MT 80W-90	5.2 US gal/20 Liter	147 430.0
AGRISHIFT MT 80W-90	Pallet of 40 5.2 US gal/20 Liter Jugs	CLPALLET1474300
AGRISHIFT BLS 90	5.2 US gal/20 Liter	147 397.0
AGRISHIFT BLS 90	Pallet of 40 5.2 US gal/20 Liter Jugs	CLPALLET1473970
AGRISHIFT SYN FE 75W-90	5.2 US gal/20 Liter	560 576.1
Anti-freeze		
AGRI-COOL Premix	1.3 US gal/5 Liter	0147 471.0
AGRI-COOL Premix	5.2 US gal/20 Liter	0147 472.0
AGRI-COOL Concentrate	5.2 US gal/20 Liter	1498 725.0
Grease		
AGRIGREASE EP2	Cartridge	147 437.0
AGRIGREASE EP2	11 US lbs/5 kg	147 341.0
AGRIGREASE EP3	Cartridge	241 793.1
AGRIGREASE LC 00/000	Cartridge	147 438.0
Talcum Powder		
	bottle	241 756.0



EASY: Efficient Agriculture Systems by CLAAS

The name says it all.

The electronic expertise of CLAAS can be summarized in one word: EASY Efficient Agriculture Systems, and it lives up to its name. Combine settings, steering systems, software solutions and more: EASY makes it all simple. These systems can be matched perfectly, enabling you to get the best performance from your combine and top results for your operation.

Go on. Go EASY.

Four components make one EASY concept. Each one has its own specialty, and when combined, they form a powerful team.

- on board – Combine control and performance optimization from the cab
- on field – Increase productivity directly in the field
- on track – Equipment monitoring and diagnostics
- on farm – Software solutions for your operation





		770 / 770 TERRA TRAC C49	760 / 760 TERRA TRAC C49	750 / 750 TERRA TRAC C48	740 / 740 TERRA TRAC C48	730 C48	670 C44
Communication module kit ¹	Q15 0030	506 237.1	506 237.1	506 237.1	506 237.1	506 237.1	506 237.1
Telematics kit ²	Q07 0205	506 238.0	506 238.0	506 238.0	506 238.0	506 238.0	506 238.0
1st yr full customer access with 1 yr dealer access in CDS remote, Compact flash card							
Additional Telematics license ²		****	****	****	****	****	****
1 to 5 additional yrs full customer access only							
CDS Remote only license ²		****	****	****	****	****	****
1 or 3 additional yrs dealer remote access only							
CDS Remote (Dealer Tool)		015 424.0	015 424.0	015 424.0	015 424.0	015 424.0	015 424.0
Printer for CEBIS	Q07 0050	91021665*	91021665*	91021865*	91021865*	91021865*	91021865*
QUANTIMETER	Q08 0011	91022175*	91022175*	91022183*	91022183*	91022183*	91022171*
CLAAS Yield Mapping ³	Q07 0160	91022157*	91022157*	91022159*	91022159*	91022159*	91022169*
Ag Leader Monitor Ready	Q13 0110	509 820.0	509 820.0	509 820.0	509 820.0	509 820.0	509 820.0
Ag Leader ParaDyme Ready	Q13 0120	509 824.0	509 824.0	509 824.0	509 824.0	509 824.0	509 824.0
ParaDyme cab mount		509 825.0	509 825.0	509 825.0	509 825.0	509 825.0	509 825.0
Tailings monitoring- electronic ³	E10 0010	91022127*	91022127*	91022002*	91022002*	91022002*	91022121*
QUANTIMETER module ⁴		16654.2	16654.2	16654.2	16654.2	16654.2	16654.2
QUANTIMETER wiring harness ⁴		16752.1	16752.1	16752.1	16752.1	16752.1	16752.1
GRAINMETER analyzer for returns ³	E10 0030	91022131*	91022131*	91022006*	91022006*	91022006*	91022125*
CRUISE PILOT for STD feederhouse ⁵	B10 0060	91021655*	91021655*	91022075*	-	-	-
CRUISE PILOT for HP feederhouse ⁵	B10 0070	91021657*	91021657*	91022077*	-	-	-
Process control prepared kit ⁶	Q15 0010	91022610*	91022610*	91022610*	91022610*	91022610*	-
CEMOS Monitor kit	Q07 0075	91023141*	91023141*	91023141*	91023141*	91023141*	-
CEMOS Terminal prepared kit	Q07 0076	91023143*	91023143*	91023143*	91023143*	91023143*	-

*May require additional lead time

¹Required for Telematics, CLAAS Yield Mapping or CDS Remote if not equipped

²Requires a customer supplied SIM card data plan

³Requires QUANTIMETER

⁴Required if installing tailings monitoring – electronic without QUANTIMETER installed

⁵Only 770/770TT, 760/760TT, 750 TT 25 mph models

⁶Required for both CRUISE PILOT or CEMOS

**** Contact CLAAS Technical Support for code (402) 861-1000 option 3

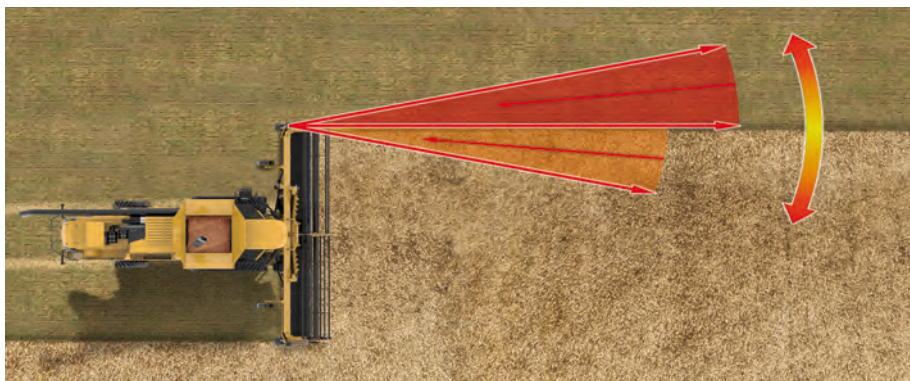
EASY:
Efficient Agriculture Systems

EASY: on field



		MAXFLO 1200 / 1050	MAXFLEX VARIO 1200 / 1050	16-30 12-30 / 12-30c 8-30 / 8-30c 6-30 Corn Headers	12-22 / 12-22c Corn Headers	18-20 / 18-20c 12-20 / 12-20c Corn Headers	8-38 8-36 Corn Headers
LASER PILOT sensor kit - right		509 341.0	509 341.0	-	-	-	-
LASER PILOT sensor kit - left		509 342.0	509 342.0	-	-	-	-
LASER PILOT mounting brackets-Left		CL99995300	CL99995330	-	-	-	-
LASER PILOT mounting bracket-right		CL99995310	CL99995340	-	-	-	-
AUTO PILOT kit - header parts	R05 0010	-	-	527 057.0	-	-	-
AUTO PILOT kit - header parts	R05 0015	-	-	-	-	91023135	-
AUTO PILOT kit - header parts	R05 0020	-	-	-	-	-	998 162.0
AUTO PILOT kit - header parts	R05 0022	-	-	-	91022403	-	-
AUTO PILOT sensor - right ¹		-	-	053 016.1	053 016.1	053 016.1	053 016.1
AUTO PILOT sensor - left ¹		-	-	053 017.1	053 017.1	053 017.1	053 017.1

¹ If converting a 400/500 Series header to be used on 700/600 Series LEXION



PROFI CAM: Additional eyes in the field



Flexibility and convenience.

Flexibility

With the PROFIL CAM 3, our new camera package offers you the ability to display images from your cable-connected camera into your combine with ease.

With the standardized switch box, the camera and monitor can be easily swapped around on your machines. The modular design ensures that machines equipped with the camera system can be combined with one another as required.

Convenience

The camera delivers top image quality, in color and with high resolution. You can conveniently choose between different displays on the monitor from the comfort of the cab: one, two, three or four camera images simultaneously, or "Picture in Picture". A standardized pin configuration ensures simple connections.

Additionally, a range of brackets are available to facilitate simple and flexible positioning of the monitor and camera units.



Up to four cameras or receivers can be connected to the switch box, in addition to the quad-split monitor for displaying the camera images.



The LCD monitor with 7" screen features high resolution and outstanding brilliance, ensuring an excellent picture quality even in bright sunlight. The monitor can display up to four camera images at once.

Article number	Description
----------------	-------------

General overview

017 030.0	PROFI CAM 3.6 kit ¹
017 000.0	7" 16:9 monitor with 4.0-m cable
017 010.0	Monitor bracket, universal
017 003.1	Switch box with 4.0-m power cable
017 001.0	PROFI CAM 3 camera with 1.0-m cable
017 011.0	Camera bracket, universal – long
017 028.0	6.0-m video cable
017 021.0	Monitor sunshade
017 022.0	Camera sunshade
017 023 0	Camera replacement glass

017 047.0	PROFI CAM 3.14 kit ¹
017 000.0	7" 16:9 monitor with 4.0-m cable
017 010.0	Monitor bracket, universal
017 003.1	Switch box with 4.0-m power cable
017 001.0	PROFI CAM 3 camera with 1.0-m cable
017 011.0	Camera bracket, universal – long
017 006.0	14-m video cable
017 021.0	Monitor sunshade
017 022.0	Camera sunshade
017 023 0	Camera replacement glass

Additional Camera kits

017 044.0	PROFI CAM 3 complete camera
017 001 0	Camera with 1.0-m cable
017 022 0	Sunshade
017 023 0	Camera replacement glass

¹May require additional parts to complete kits

Article number	Description
----------------	-------------

017 046.0	PROFI CAM 3 camera (24 V complete)
017 014 0	Camera with 1.0-m cable
017 022 0	Sunshade
017 023 0	Camera replacement glass

Individual parts

017 000.0	7" 16:9 monitor with 4.0-m cable
017 001.0	PROFI CAM 3 camera with 1.0-m cable
017 003.1	Switch box with 4.0-m power cable
017 006.0	14-m video cable
017 009.0	2 -m Video cable
017 010.0	Monitor bracket, universal
017 011.0	Camera bracket, universal – long (height: 128 mm)
017 014 0	Camera (24 V) with 1.0-m cable
017 018.0	Protective cover for switch box jack
017 021.0	Monitor sunshade
017 022.0	Camera sunshade
017 023.0	Camera replacement glass
017 027.0	Protective cover for video cable connector
017 028.0	6.0-m video cable
017 035.0	Camera bracket, short (height: 75 mm)
559 880.0	Switch box bracket

Suitable for predecessor system PROFi CAM 2

017 017.0	Adapter for PROFi CAM 3 camera for connection to PROFi CAM 2 system
017 032.1	PROFI CAM 3 monitor with plug-in connector for connection to PROFi CAM 2 system



● Switch box ● Camera

Position		1	2	3	4	5
		Grain tank discharge auger	Rear hood	Grain tank	Lower feeder housing	Cutterbar
Applications		Load transfer to trailer	Monitoring of straw spreader	Fill level, crop quality	Coupling aid for cutterbar	Monitoring when cutting with large cutterbar widths
Article number	Description					
017 030.0	PROFI CAM 3.6 kit			●	●	●
017 047.0	PROFI CAM 3.14 kit	●	●			
017 044.0	PROFI CAM 3 complete camera	●	●	●	●	●
017 009.0	2-m cable					● ●
017 028.0	6-m cable			●	●	● 2 x
017 006.0	14-m cable	●	●			
017 011.0	Camera bracket, universal – long	●		●	●	●
017 052.0	Camera bracket, grain tank discharge tube	● ●				
759 281.2	Camera bracket, rear hood		● ●			
017 033.0	Camera bracket, feeder housing				● ●	
559 880.0	Switch box bracket	●	●	●	●	●

- Parts required if machine not yet equipped with PROFI CAM 3 camera system.
- Parts required if machine already equipped with PROFI CAM 3 camera system.

Cab Accessories



		770 / 770 TERRA TRAC C49	760 / 760 TERRA TRAC C49	750 / 750 TERRA TRAC C48	740 / 740 TERRA TRAC C48	730 C48	670 C44
Work lights package - XENON	Q03 0051	91022153*	91022153*	91022012*	91022012*	91022012*	91022145*
High - End light package - XENON	Q03 0057	91022155*	91022155*	91022014*	91022014*	91022014*	91022147*
Mobile work light		014 595.0	014 595.0	014 595.0	014 595.0	014 595.0	014 595.0
Refrigerated cooler under trainers seat	Q03 0110	505 172.0	505 172.0	505 172.0	505 172.0	505 172.0	505 172.0
Printer for CEBIS	Q07 0050	91021665*	91021665*	91021865*	91021865*	91021865*	91021665*
Radio		536 350.0	536 350.0	536 350.0	536 350.0	536 350.0	536 350.0
CLAAS seat cover		178 053.0	178 053.0	178 053.0	178 053.0	178 053.0	178 053.0
Side window sunshade							
Left		565 336.1	565 336.1	565 336.1	565 336.1	565 336.1	565 336.1
Right		564 507.1	564 507.1	564 507.1	564 507.1	564 507.1	564 507.1
Fastener (one per side)		565 343.0	565 343.0	565 343.0	565 343.0	565 343.0	565 343.0
Windshield wiper		558 572.0	558 572.0	558 572.0	558 572.0	558 572.0	558 572.0
CMOTION Handle		559 928.0	559 928.0	559 928.0 ¹	559 929.0	559 929.0	559 929.0
				559 929.0			
In cab header folding switch		558 016.0	558 016.0	558 016.0	558 016.0	558 016.0	558 016.0
Side window accessory bar ²		CL99995500	CL99995500	CL99995500	CL99995500	CL99995500	CL99995500
Cab carpet floormat		565 779.0	565 779.0	565 779.0	565 779.0	565 779.0	565 779.0
Windshield cover for transport on truck		CLWINDSHIELDCOVER	CLWINDSHIELDCOVER	CLWINDSHIELDCOVER	CLWINDSHIELDCOVER	CLWINDSHIELDCOVER	CLWINDSHIELDCOVER

* May require additional lead time

¹ Fast Track only

² Only contains the window bar for monitors other than CEMOS, if CEMOS is used order CEMOS Terminal Prepared kit instead from page 11



Feederhouse Accessories



		770 / 770 TERRA TRAC C49	760 / 760 TERRA TRAC C49	750 / 750 TERRA TRAC C48	740 / 740 TERRA TRAC C48	730 C48	670 C44
HP Feederhouse Kit	B10 0040	CL99995520	CL99995520	CL99995510	CL99995510	CL99995510	CL99995520
AUTO CONTOUR - STD feederhouse	B04 0020	91022302*	91022302*	91022308*	91022308*	91022308*	91022314
Feederhouse Drives							
Fixed speed	B06 0010	90020879	90020879	90021092	90021092	90021092	-
Variable speed drive	B06 0020	91021649*	91021649*	91021861*	91021861*	91021861*	91022918
HD Variable speed drive	B06 0025	-	-	91021863*	91021863*	-	-
HD 2 speed (420/332) fixed drive	B06 0030	91022945*	91022945*	-	-	-	-
Dust suction fan - STD	B12 0020	91022083*	91022083*	91021994*	91021994*	91021994*	91022091
Dust suction fan - HP	B12 0030	91022085*	91022085*	91021996*	91021996*	91021996*	91022093
CRUISE PILOT for STD feederhouse ¹	B10 0060	91021655*	91021655*	91022075**	-	-	-
CRUISE PILOT for HP feederhouse ¹	B10 0070	91021657*	91021657*	91022077**	-	-	-
Feederhouse Chain - Complete		517 934.0	517 934.0	518 187.0	518 187.0	518 187.0	517 934.0
Feederhouse slats - Individual		517 935.0	517 935.0	518 241.1	518 241.1	518 241.1	517 935.0

*May require additional lead time

¹Only 770/770TT, 760/760TT, 750 TT 25 mph models





APS Threshing



		770 / 770 TERRA TRAC C49	760 / 760 TERRA TRAC C49	750 / 750 TERRA TRAC C48	740 / 740 TERRA TRAC C48	730 C48	670 C44
APS Grates							
6.5 x 40 smooth ¹		777 200.0	777 200.0	777 216.0	777 216.0	777 216.0	777 200.0
Small grains, canola							
6.5 x 40 w/ key stock ¹		757 443.0	757 443.0	757 445.0	757 445.0	757 445.0	757 443.0
Tough threshing small grains							
10 x 40 wire ¹		777 249.1	777 249.1	777 238.1	777 238.1	777 238.1	777 249.1
Soybeans, small grains							
12 x 40 kit ²	C03 0165	91022481	91022481	91022328	91022328	91022328	91022481
Greenstem soybeans, small grains							
19 x 40 smooth ¹		757 439.0	757 439.0	757 441.0	757 441.0	757 441.0	757 439.0
Corn, edible beans							
Roundbar ¹		1809 067.0	1809 067.0	1809 068.0	1809 068.0	1809 068.0	1809 067.0
Corn, edible beans							
Conversion Kits							
Small grains to corn: ²	C03 0080	91022479	91022479	91022326	91022326	91022326	91022479
19 mm APS grates, threshing cylinder filler plates							
Corn to small grains: ²	C03 0019	91022477	91022477	91022324	91022324	91022324	91022477
10 mm APS grates, pre-concave blocking plate, main concave cover plates, intensive threshing segments							
Pre-concave blocking plate		CL99995220	CL99995220	CL99995210	CL99995210	CL99995210	CL99995220
Main concave cover plates		356 729.0	356 729.0	356 728.0	356 728.0	356 728.0	356 729.0
Corn cover -open threshing cylinder ³		756 0220	756 0220	756 0230	756 0230	756 0230	-
Clover concave kit ²		736 568.1*	736 568.1*	754 836.1*	754 836.1*	754 836.1*	736 568.1*
Impeller wear plates kit		777 638.0	777 638.0	777 637.0	777 637.0	777 637.0	-
Main Concaves							
N7/N18 - small grains/grass		777 254.1	777 254.1	777 264.0	777 264.0	777 264.0	777 254.1
N18 - corn/soybean		756 080.1	756 080.1	756 184.1	756 184.1	756 184.1	756 080.1
Roundbar - specialty		754 840.0	754 840.0	754 850.0	754 850.0	754 850.0	754 840.0

*May require additional lead time

¹ Only individual part number, machine requires 3 grates

² Includes 3 APS grates in kit

³ Required for CO2 0100 threshing system if used in corn

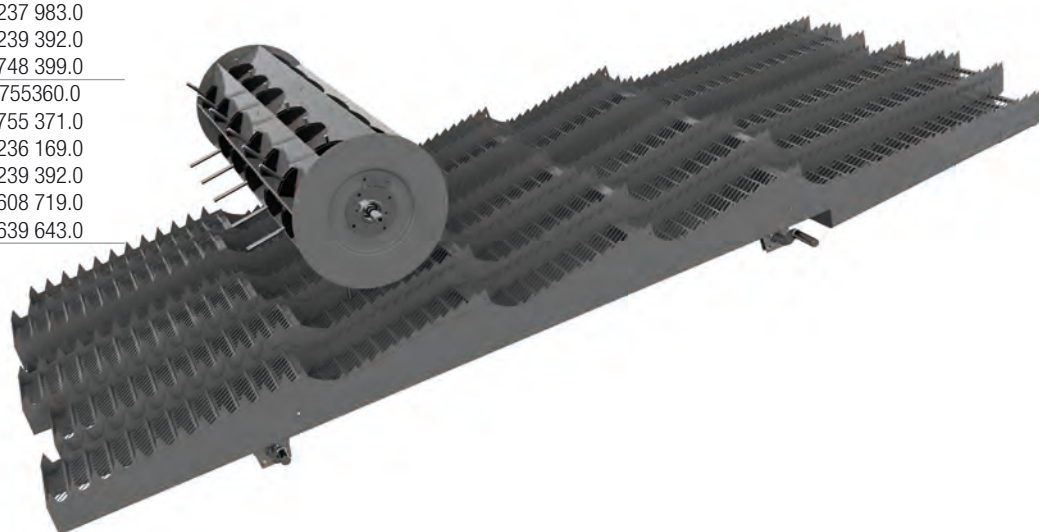
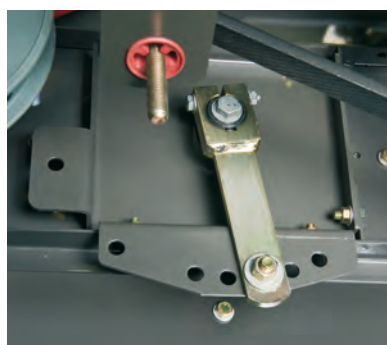


Straw Walker Accessories



670 C44

Lateral Fishbacks ¹	6	751 626.0
Nuts	30	236 169.0
Washers	30	239 392.0
Coach bolts	30	665 564.1
Parallel Fishbacks ²	36	755 493.0
Nuts	144	237 983.0
Washers	144	239 392.0
Clamping plate	144	748 399.0
Center Riser - Medium ³	6	748 396.0
Nuts	24	237 983.0
Washers	24	239 392.0
Clamping plate	24	748 399.0
Center Riser - Tall ⁴	12	748 395.0
Nuts	48	237 983.0
Washers	48	239 392.0
Clamping plate	48	748 399.0
Center Riser - CCM	12	755360.0
Cover plate	12	755 371.0
Nut	24	236 169.0
Washer	24	239 392.0
Clamp strap	24	608 719.0
Clamp angle	24	639 643.0



*Consult OMM for placement locations

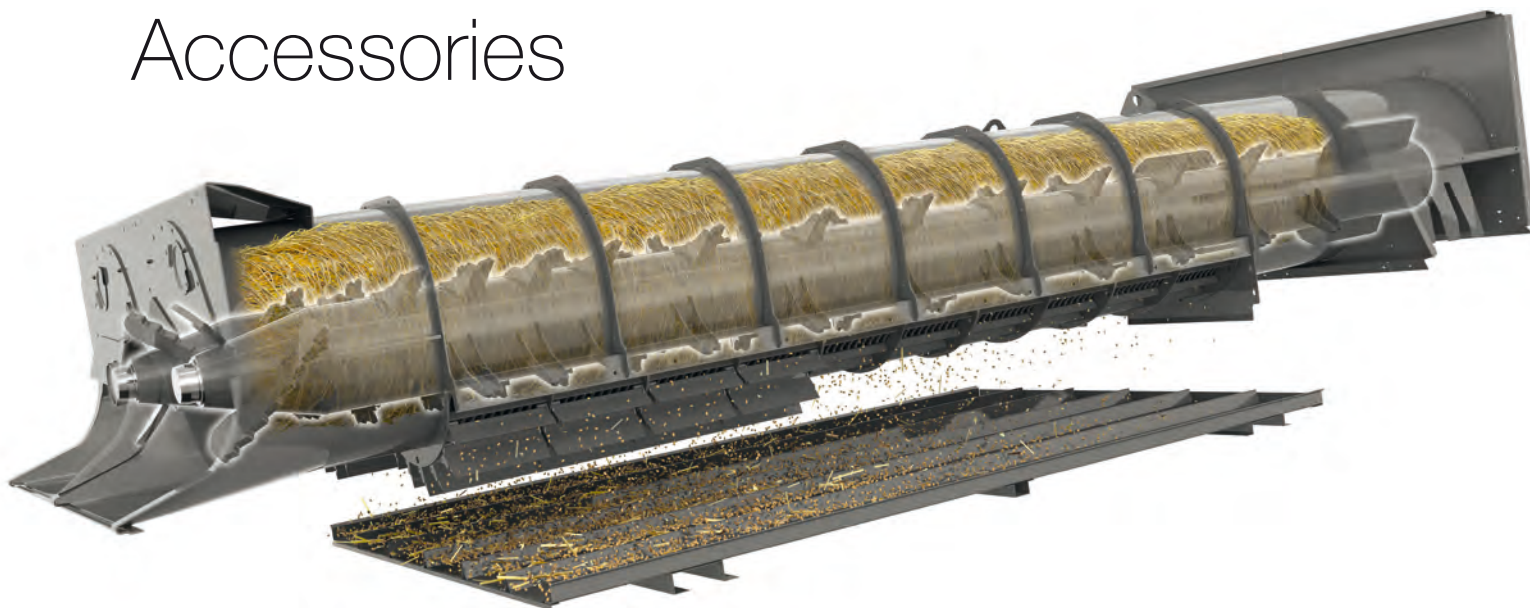
¹ Used in conditions with high straw volume

² Use in conditions with short brittle straw

³ Use in conditions with heavy straw

⁴ Use in conditions with extremely heavy straw

ROTO PLUS Accessories



		770 / 770 TERRA TRAC C49	760 / 760 TERRA TRAC C49	750 / 750 TERRA TRAC C48	740 / 740 TERRA TRAC C48	730 C48
Variable speed rotor drive (360 - 1050 rpm)	D06 0020	91022336*	91022336*	91022332*	91022332*	91022332*
In-cab rotor covers adjustment ¹	D10 0030 D10 0040	CL99995470* CL99995470*	CL99995470* CL99995470*	91012431* CL99995460*	91012431* CL99995460*	91012431* CL99995460*
Flax universal rotors	Left Right	508 310.1 508 320.1	508 310.1 508 320.1	508 310.1 508 320.1	508 310.1 508 320.1	508 310.1 508 320.1
Standard universal rotors	Left Right	508 210.2 508 220.2	508 210.2 508 220.2	508 210.2 508 220.2	508 210.2 508 220.2	508 210.2 508 220.2
Material flow transition kit ²		14983400*	14983400*	14983410*	14983410*	14983410*

ROTO PLUS wear parts

Rotor intake stripper fins	Right Rotor	782 528.0	782 528.0	782 528.0	782 528.0	782 528.0
Intake wear strip	Right Rotor	782 531.0	782 531.0	782 531.0	782 531.0	782 531.0
Intake toothed bar	Right Rotor	782 530.1	782 530.1	782 530.1	782 530.1	782 530.1
Rotor intake stripper fins	Left Rotor	782 507.0	782 507.0	782 507.0	782 507.0	782 507.0
Intake wear strip	Left Rotor	782 510.0	782 510.0	782 510.0	782 510.0	782 510.0
Intake toothed bar	Left Rotor	782 505.1	782 505.1	782 505.1	782 505.1	782 505.1
Rotor wear caps		782 533.1	782 533.1	782 533.1	782 533.1	782 533.1

* May require additional lead time

¹ Electric rotor cover were installed on C48 machines only that ordered with D10 0030, all C49 are hydraulic along with C48 ordered with D10 0040

² Replacing impeller wear parts & rotor intake parts may also be needed



Cleaning Shoe Accessories

		770 / 770 TERRA TRAC C49	760 / 760 TERRA TRAC C49	750 / 750 TERRA TRAC C48	740 / 740 TERRA TRAC C48	730 C48	670 C44
TOP SIEVE							
Shallow tooth frogmouth - Small Grains ¹	E14 0010	91022596*	91022596*	91022572*	91022572*	91022572*	736 060.2*
TM6 adjustable airfoil ¹	E14 0020	91022598*	91022598*	91022574*	91022574*	91022574*	736 058.0*
Deep tooth frogmouth - Corn/Soybean ¹	E14 0030	91022600*	91022600*	91022576*	91022576*	91022576*	739 543.1*
16 mm round hole		757 362.0*	757 362.0*	757 352.1*	757 352.1*	757 352.1*	736 116.1*
18 mm round hole		757 363.0*	757 363.0*	757 353.0*	757 353.0*	757 353.0*	754 244.0*
18 mm beveled round hole		757 364.0*	757 364.0*	757 354.0*	757 354.0*	757 354.0*	736 122.1*
20 mm beveled round hole		757 355.0*	757 355.0*	757 355.0*	757 355.0*	757 355.0*	736 123.1*
Corn/Cob 80/20 mixture		756 477.0*	756 477.0*	756 476.0*	756 476.0*	756 476.0*	736 124.1*
BOTTOM SIEVE							
TM6 adjustable airfoil		756 448.0*	756 448.0*	756 446.0	756 446.0*	756 446.0*	736 059.0*
Deep tooth frogmouth		756 475.0*	756 475.0*	756 474.0	756 474.0*	756 474.0*	-
Shallow tooth frogmouth - Standard		756 465.0*	756 465.0*	756 462.0	756 462.0*	756 462.0*	736 061.2*
2.5 mm round hole		757 366.0*	757 366.0*	757 356.0	757 356.0*	757 356.0*	736 120.0*
4.5 mm round hole		757 367.0*	757 367.0*	757 357.0*	757 357.0*	757 357.0*	736 119.0*
7 mm round hole		757 368.0*	757 368.0*	757 357.0*	757 357.0*	757 357.0*	736 118.0*
12 mm round hole		756 478.0*	756 478.0*	757 359.0*	757 359.0*	757 359.0*	736 117.0*
16 mm round hole		756 479.1*	756 479.1*	757 360.0*	757 360.0*	757 360.0*	751 274.0*
18 mm round hole		756 480.0*	756 480.0*	757 361.0*	757 361.0*	757 361.0*	751 959.0*
18 mm beveled round hole		756 481.0*	756 481.0*	757 350.0*	757 350.0*	757 350.0*	736 122.1*
20 mm beveled round hole		756 482.0*	756 482.0*	757 351.0*	757 351.0*	757 351.0*	751 276.0*

*May require additional lead time

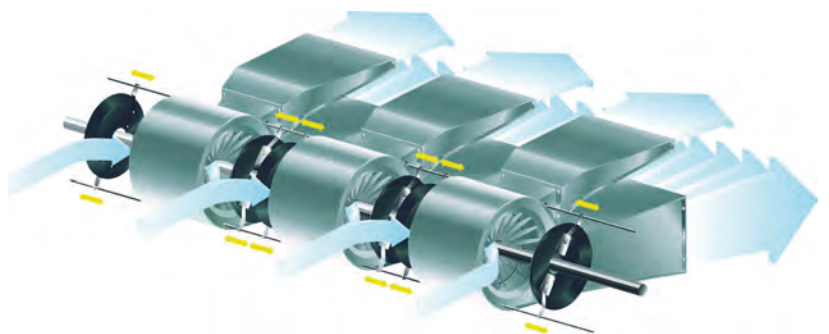
¹Kit number includes both top sieves, except for 670



		770 / 770 TERRA TRAC C49	760 / 760 TERRA TRAC C49	750 / 750 TERRA TRAC C48	740 / 740 TERRA TRAC C48	730 C48	670 C44
3-D Cleaning system kit	E04 0020	91022113*	91022113*	91021998*	91021998*	91021998*	91022117*
Wind reduction kit	E05 0010	628 914.0	628 914.0	628 914.0	628 914.0	628 914.0	785 779.0
Return elevator head extension		749 263.0	749 263.0	749 263.0	749 263.0	749 263.0	749 262.0
Sieve crank kit ¹		173 638.0	173 638.0	173 638.0	173 683.0	173 683.0	-

*May require additional lead time

¹ May not work for all crops or conditions



Shown wind reduction kit for the LEXION 670

Grain Handling Accessories

		770 / 770 TERRA TRAC C49	760 / 760 TERRA TRAC C49	750 / 750 TERRA TRAC C48	740 / 740 TERRA TRAC C48	730 C48	670 C44
Unloading boot - standard	500mm	792 914.0	792 914.0	792 914.0	792 914.0	792 914.0	792 914.0
Unloading boot - XL	1000mm	792 796.1	792 796.1	792 796.1	792 796.1	792 796.1	792 796.1
Unloading rate 3.3 bu/sec Kit	F08 0020	-	-	91022135*	91022135*	91022135*	-
Unloading auger protectin							
Shear bolt		237 341.0	237 341.0	237 341.0	237 341.0	237 341.0	237 341.0
Nut		238 132.0	238 132.0	238 132.0	238 132.0	238 132.0	238 132.0
Clean		757 747.0	757 747.0	757 728.0	757 728.0	757 728.0	755 017.0
grain cross auger trough - perforated							
Return		757 930.0	757 930.0	757 925.0	757 925.0	757 925.0	755 023.0
grain cross auger trough - perforated							
Clean grain elevator boot		795 572.0	795 572.0	795 572.0	795 572.0	795 572.0	687 912.0
- perforated							
Return elevator boot		687 914.0	687 914.0	687 914.0	687 914.0	687 914.0	687 914.0
- perforated							
Clean grain elevator chain - Complete		757 209.2	757 209.2	757 209.2	757 209.2	757 209.2	757 220.0
Returns elevator chain - Complete		795 371.0	795 371.0	795 371.0	795 371.0	795 371.0	735 367.0
Return elevator head extension		749 263.0	749 263.0	749 263.0	749 263.0	749 263.0	749 262.0

*May require additional lead time

Extended Life Rice Accessories



			770 / 770 TERRA TRAC C49	760 / 760 TERRA TRAC C49	750 / 750 TERRA TRAC C48	740 / 740 TERRA TRAC C48	730 C48
Complete Extended Life Rice Kit			CLHARDRICEWIDE*	CLHARDRICEWIDE*	CLHARDRICENARROW*	CLHARDRICENARROW*	CLHARDRICENARROW*
	Required amount						
APS Threshing							
APS grate hold down	3		CL7574130H*	CL7574130H*	CL7574290H*	CL7574290H*	CL7574290H*
APS 10 x 40 grate	3		CL7772491H*	CL7772491H*	CL7772381H*	CL7772381H*	CL7772381H*
Pre-Concave frame	1		CL7574002H*	CL7574002H*	CL7574252H*	CL7574252H*	CL7574252H*
Concave							
N18 main concave	1		CL7560801H*	CL7560801H*	CL7561841H*	CL7561841H*	CL7561841H*
ROTO PLUS Separation							
Rotor intake stripper fins	Right Rotor	2	CL7825280H*	CL7825280H*	CL7825280H*	CL7825280H*	CL7825280H*
Intake wear strip	Right Rotor	2	CL7825310H*	CL7825310H*	CL7825310H*	CL7825310H*	CL7825310H*
Intake toothed bar	Right Rotor	2	CL7825301H*	CL7825301H*	CL7825301H*	CL7825301H*	CL7825301H*
Coach Bolts	Right Rotor	40	CL2365140H*	CL2365140H*	CL2365140H*	CL2365140H*	CL2365140H*
Ejector coach bolts	Right Rotor	20	CL2364420H*	CL2364420H*	CL2364420H*	CL2364420H*	CL2364420H*
Ejector bar	Right Rotor	2	CL7583051H*	CL7583051H*	CL7583051H*	CL7583051H*	CL7583051H*
Rotor wear caps	Right Rotor	40	CL7825331H*	CL7825331H*	CL7825331H*	CL7825331H*	CL7825331H*
Rotor intake stripper fins	Left Rotor	2	CL7825070H*	CL7825070H*	CL7825070H*	CL7825070H*	CL7825070H*
Intake wear strip	Left Rotor	2	CL7825100H*	CL7825100H*	CL7825100H*	CL7825100H*	CL7825100H*
Intake toothed bar	Left Rotor	2	CL7825051H*	CL7825051H*	CL7825051H*	CL7825051H*	CL7825051H*
Coach Bolts	Left Rotor	40	CL2365140H*	CL2365140H*	CL2365140H*	CL2365140H*	CL2365140H*
Ejector coach bolts	Left Rotor	20	CL2364420H*	CL2364420H*	CL2364420H*	CL2364420H*	CL2364420H*
Ejector bar	Left Rotor	2	CL7583191H*	CL7583191H*	CL7583191H*	CL7583191H*	CL7583191H*
Rotor wear caps	Left Rotor	40	CL7825331H*	CL7825331H*	CL7825331H*	CL7825331H*	CL7825331H*
Rotor grate		16	CL7921552H*	CL7921552H*	CL7933602H*	CL7933602H*	CL7933602H*
MAV Chopper							
Chopper floor		1	CL5091600H	CL5091600H	CL5091610H	CL5091610H	CL5091610H

*May require additional lead time

****If the CL & H are removed from the part number it reveals the standard part number****



Rear Axle Accessories



		770 / 770 TERRA TRAC C49	760 / 760 TERRA TRAC C49	750 / 750 TERRA TRAC C48	740 / 740 TERRA TRAC C48	730 C48	670 C44
AUTO PILOT - rear axle	B14 0010	91022107*	91022107*	91022103*	91022103*	91022103*	91022095*
Powered, rear axle ^{1,2}	N08 0434	91022517*	91022517*	91022210*	91022210*	91022210*	91022922*
620/75 R26 rim only ³	N10 0393	353 327.0	353 327.0	353 327.0	353 327.0	353 327.0	-
	N10 0399						
28L R26 rim only ³	N10 0402	353 326.0	353 326.0	353 326.0	353 326.0	353 326.0	-

*May require additional lead time

¹ Requires 335mm diameter lug rim pattern

² Exception, 670 walker requires 225mm diameter lug rim pattern

³ Individual parts numbers, may require more than one



Residue Management

		770 / 770 TERRA TRAC C49	760 / 760 TERRA TRAC C49	750 / 750 TERRA TRAC C48	740 / 740 TERRA TRAC C48	730 C48	670 C44
PRO CHOP	G02 0065						
Shear bar	2	741 491.0	741 491.0	741 486.0	741 486.0	741 486.0	741 486.0
Rotating knife	108/72	736 872.0	736 872.0	736 872.0	736 872.0	736 872.0	736 872.0
Bushing	108/72	736 871.2	736 871.2	736 871.2	736 871.2	736 871.2	736 871.2
Washer	108/72	755 869.0	755 869.0	755 869.0	755 869.0	755 869.0	755 869.0
Bolt	54/36	233 572.0	233 572.0	233 572.0	233 572.0	233 572.0	233 572.0
Nut	54/36	238 006.0	238 006.0	238 006.0	238 006.0	238 006.0	238 006.0
Stationary Counterknife - Standard	67/55	060 030.0	060 030.0	060 030.0	060 030.0	060 030.0	060 030.0
Stationary Counterknife - Serrated	67/55	737 600.0	737 600.0	737 600.0	737 600.0	737 600.0	737 600.0
Active tail board paddle - inner	8	731 369.1	731 369.1	731 369.1	731 369.1	731 369.1	731 369.1
Active tail board finger paddle - outer	8	749 024.0	749 024.0	749 024.0	749 024.0	749 024.0	749 024.0
TURBO	G02 0064						
Shear bar	2	741 491.0	741 491.0	741 486.0	741 486.0	741 486.0	741 486.0
Rotating knife	88/72	353 195.0	353 195.0	353 195.0	353 195.0	353 195.0	353 195.0
Bushing	88/72	18002820	18002820	18002820	18002820	18002820	18002820
Washer	88/72	18002830	18002830	18002830	18002830	18002830	18002830
Bolt	44/36	215 010.0	215 010.0	215 010.0	215 010.0	215 010.0	215 010.0
Nut	44/36	238 006.0	238 006.0	238 006.0	238 006.0	238 006.0	238 006.0
Stationary Counterknife - Standard	67/55	060 030.0	060 030.0	060 030.0	060 030.0	060 030.0	060 030.0
Stationary Counterknife - Serrated	67/55	737 600.0	737 600.0	737 600.0	737 600.0	737 600.0	737 600.0
Active tailboard - paddle	8	508 575.1	508 575.1	508 575.1	508 575.1	508 575.1	508 575.1





		770 / 770 TERRA TRAC C49	760 / 760 TERRA TRAC C49	750 / 750 TERRA TRAC C48	740 / 740 TERRA TRAC C48	730 C48	670 C44
MAV	G02 0120						
Rotating cutting knife	60/52	353 195.0	353 195.0	353 195.0	353 195.0	353 195.0	353 195.0
Bushing	60/52	353 412.1	353 412.1	353 412.1	353 412.1	353 412.1	353 412.1
Washer	60/52	353 413.0	353 413.0	353 413.0	353 413.0	353 413.0	353 413.0
Bolt	30/26	215 010.0	215 010.0	215 010.0	215 010.0	215 010.0	215 010.0
Nut	30/26	238 006.0	238 006.0	238 006.0	238 006.0	238 006.0	238 006.0
Rotating MAV knife - Right	6	353 187.0	353 187.0	353 187.0	353 187.0	353 187.0	353 187.0
Rotating MAV knife - Left	6	353 188.0	353 188.0	353 188.0	353 188.0	353 188.0	353 188.0
Bushing	24	353 412.1	353 412.1	353 412.1	353 412.1	353 412.1	353 412.1
Washer	12	353 413.0	353 413.0	353 413.0	353 413.0	353 413.0	353 413.0
Bolt	12	215 010.0	215 010.0	215 010.0	215 010.0	215 010.0	215 010.0
Nut	12	238 006.0	238 006.0	238 006.0	238 006.0	238 006.0	238 006.0
Counterknife	31/25	353 522.1	353 522.1	353 522.1	353 522.1	353 522.1	353 522.1
Counterknife floor - 1 inch spacing ¹		353 089.0	353 089.0	353 578.0	353 578.0	353 578.0	353 578.0
Straw Spreaders	G02 0030						
Spreader blade	6	050 154.1	050 154.1	050 154.1	050 154.1	050 154.1	050 154.1

¹Finer chop, requires more counter knives



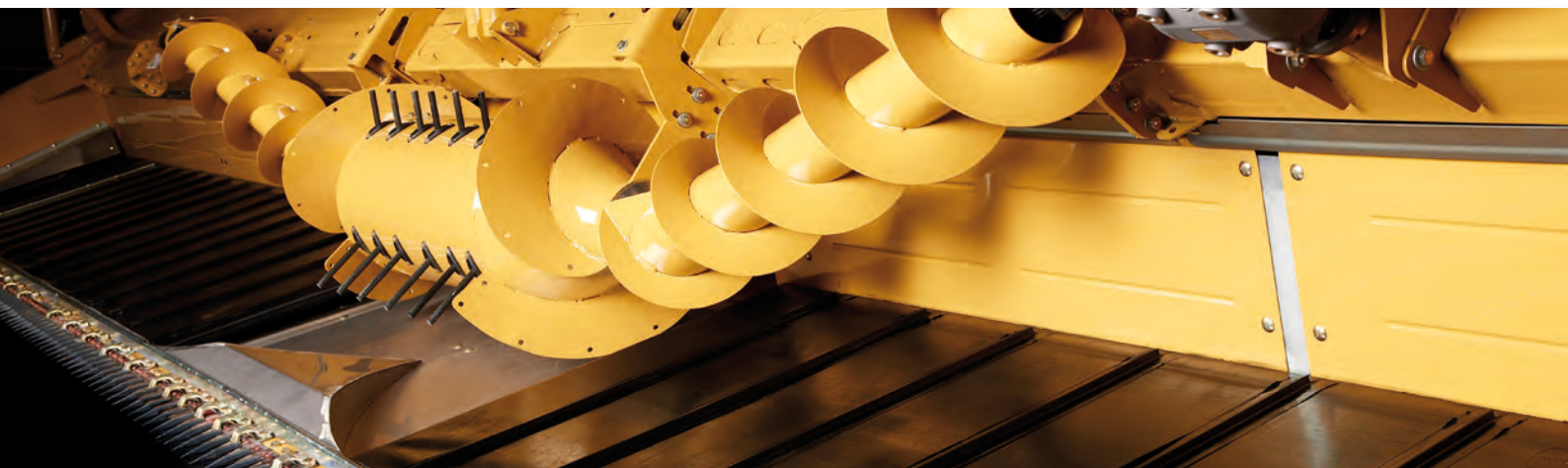
CLAAS Headers





MAXFLO

Draper Header 1200/1050



		MAXFLO 1200 53700011- 53799999	MAXFLO 1050 53700011- 53799999
Draper Belt			
	Quantity		
Conveyer belt	2	381 433.1	381 432.0
Belt clamping complete kit	2	CL99995030	CL99995030
Clamping tube with hardware			
Belt clamping hardware kit	2	CL99995020	CL99995020
Hardware only no tube			
Draper belt repair kit		381506.0	381506.0
46 inch conveyer belt, clamping complete kit			
Belt idler roller kit	2	CL99995040	CL99995040
1 roller with bearing			
Belt drive roller kit	2	CL99995050	CL99995050
1 roller with bearing			
Cutting Bar			
Double finger guards - Center Overlap	2	519 601.0	519 601.0
Double finger guards - Standard	74/64	519 600.0	519 600.0
Triple finger guards - Ends	2	521 280.0	521 280.0
Knife bar hold down	36/32	520 714.0	520 714.0
Knife head hold down	2	520 713.1	520 713.1
Semi-complete knife - Left ¹	1	519 615.1	519 613.1
Semi-complete knife - Right ¹	1	519 635.1	519 633.1
Knife head - Left	1	521 250.0	521 250.0
Knife head - Right	1	521 253.0	521 253.0
Knife section kit		CL99995060	CL99995060
10 SG sections with hardware			
Knife overlapping section kit		CL99995130	CL99995130
10 beveled SG sections with countersunk hardware			
Knife hardware kit - bolts/nuts		CL99995070	CL99995070
Ratchet slip clutch shaft assembly	2	384 582.1	384 582.1
Ratchet slip clutch assembly only	2	384 701.1	384 701.1
Crop lifter	38/34	626 299.1	626 299.1

¹ Excludes knife head

² Standard speed is 609/min

³ If equipped

	MAXFLO 1200 53700011- 53799999	MAXFLO 1050 53700011- 53799999
Reel		
Reel tine kit	CL99995000	CL99995000
5 tines with hardware		
Outer bearing ring - reel spider	359 910.2	359 910.2
Inner bearing ring - reel spider	359 911.2	359 911.2
Bearing bushing - reel spider	359 912.3	359 912.3

Auger		
Auger finger kit	CL99995010	CL99995010
5 auger fingers, guides with hardware		
Speed reduction kit, gears ² - 250/min	381 969.0	381 969.0
Speed reduction kit, gears ² - 150/min	381 968.0	381 968.0

LASER PILOT			
LASER PILOT sensor kit	right	509 341.0	509 341.0
LASER PILOT sensor kit	left	509 342.0	509 342.0
LASER PILOT mounting bracket	right	CL99995320	CL99995320
LASER PILOT mounting bracket	left	CL99995300	CL99995300

Canola Package*		
Left side knife	385 043.0	385 043.0
Right side knife	385 040.0	385 039.0

*Requires unit to be Canola ready

Grain/Rice Header

G750/R750



		G750 71701011- 71799999	R750 71701011- 71799999
Cutting Bar			
	Quantity		
Finger guard - Left end	1	626 296.1	-
Finger guard - Right end	1	626 294.0	-
Double finger guards - Standard	49	626 295.1	-
Double knife guard repair kit		-	CL99995150
Knife bar hold down	21	767 940.0	626 782.1
Knife head hold down	2/1	626 748.1	688 955.0
Complete knife		626 739.2	688 879.1
Knife section kit		CL99995060	CL99995140
10 SG or Rice sections with hardware			
Knife hardware kit - bolts/nuts		CL99995070	-
Knife end section - Left		615 306.0	-
Knife end section - Right		611 204.1	688 960.0
Auger			
Auger finger kit		CL99995010	CL99995010
5 auger fingers, guides with hardware			
Slip clutch assembly	1	519 118.0	519 118.0
Clutch pads, only	2	749 936.1	749 936.1

Flex Header

F900/F750



Cutting Bar	Quantity	F900	F750
		43802011- 43899999	43802011- 43899999
Finger guards - End	1	626 296.1	626 296.1
Double finger guards - Standard		767 265.1	767 265.1
Knife bar hold down		626 749.1	626 749.1
Knife head hold down		626 748.1	626 748.1
Complete knife		626 754.2	626 739.2
Knife head		666 743.1	666 743.1
Rubber cap w/ clip		518 355.0	518 355.0
Castellated nut		244 457.0	244 457.0
Knife section kit		CL99995100	CL99995100
10 Soybean sections with hardware			
Knife hardware kit - bolts/nuts		CL99995080	CL99995080
Knife end section - Left		615 306.0	615 306.0
Knife end section - Right		611 204.1	611 204.1
Auger			
Auger finger kit		CL99995170	CL99995170
5 auger fingers, guides with hardware			
Slip clutch assembly	1	519 118.0	519 118.0
Clutch pads, only	2	749 936.1	749 936.1

MAXFLEX

Flex Header 1200/1050



		MAXFLEX 1200 53500011- 53599999	MAXFLEX 1050 53500011- 53599999
Cutting Bar	Quantity		
Double finger guards - Center Overlap	2	521 283.0	521 283.0
Double finger guards - Standard	78/68	521 282.0	521 282.0
Knife bar hold down	38/34	520 714.0	520 714.0
Knife head hold down	2	520 713.1	520 713.1
Semi-complete knife - Left ¹	1	519 606.1	519 604.1
Semi-complete knife - Right ¹	1	519 616.2	519 614.1
Shims		673 753.1	673 753.1
Knife head - Left	1	521 250.0	521 250.0
Knife head - Right	1	521 253.0	521 253.0
Knife section kit 10 Soybean sections with hardware		CL99995100	CL99995100
Knife overlapping section kit 10 beveled Soybean section, countersunk hardware		CL99995090	CL99995090
Knife hardware kit - bolts/nuts		CL99995080	CL99995080
Knife 1/2 end section - Left	1	359 059.0	359 059.0
Knife 1/2 end section - Right	1	767 252.0	767 252.0
Knife overload			
Shear bolt	2	237 341.0	237 341.0
Nut	2	238 132.0	238 132.0
Skids			
Ridged skid	13/11	359 773.2	359 773.2
Skid strap		523 729.1	523 729.1
Flex skid	22/18	359 111.1	359 111.1
Front wear skid replacement kit 3 front skids with rivets	37/31	CL99995110	CL99995110
Control arm skid	2	521 813.0	521 813.0
Rivets	12	212 607.1	212 607.1
End divider skid - left	1	521 938.0	521 938.0
Rivets	6	212 607.1	212 607.1
End divider skid - right	1	521 939.0	521 939.0
Rivets	6	212 607.1	212 607.1

		MAXFLEX 1200 53500011- 53599999	MAXFLEX 1050 53500011- 53599999
Reel			
Reel tine kit		CL99995000	CL99995000
Outer bearing ring - reel spider		359 910.2	359 910.2
Inner bearing ring - reel spider		359 911.2	359 911.2
Bearing bushing - reel spider		359 912.3	359 912.3
Auger			
Auger finger kit		CL99995010	CL99995010
5 auger fingers, guides with hardware			
Speed reduction kit 2 different gears		521 824.0	521 824.0
Trough			
Ridged locking bolt	13/11	238 419.0	238 419.0
Washer		234 377.0	234 377.0
Lamellar plug	13/11	217 645.0	217 645.0
Rear wall grain pan kit		CL99995440	CL99995430
LASER PILOT			
LASER PILOT sensor kit	Right	509 341.0	509 341.0
LASER PILOT sensor kit	Left	509 342.0	509 342.0
LASER PILOT mounting brackets	Right	358 450.0	358 450.0
LASER PILOT mounting brackets	Left	358 449.0	358 449.0
Contouring			
Ridged AUTO CONTOURING kit		523 197.0	523 197.0

VARIO

1200/1050



		VARIO 1200 53300011- 53399999	VARIO 1050 53300011- 53399999
Cutting Bar	Quantity		
Double finger guards - Center Overlap	2	519 601.0	519 601.0
Double finger guards - Standard	77/67	519 600.0	519 600.0
Knife bar hold down	38/34	520 714.0	520 714.0
Knife head hold down	2	520 713.1	520 713.1
Semi-complete knife - Left ¹	1	519 615.1	519 613.1
Semi-complete knife - Right ¹	1	519 635.1	519 633.1
Shims		673 753.1	673 753.1
Knife head - Left	1	521 250.0	521 250.0
Knife head - Right	1	521 253.0	521 253.0
Knife section kit		CL99995060	CL99995060
10 SG sections with hardware			
Knife overlapping section kit		CL99995130	CL99995130
10 beveled SG sections with countersunk hardware			
Knife hardware kit - bolts/nuts		CL99995080	CL99995080
Knife 1/2 end section - Left	1	359 059.0	359 059.0
Knife 1/2 end section - Right	1	767 252.0	767 252.0
Knife overload			
Shear bolt	2	237 341.0	237 341.0
Nut	2	238 132.0	238 132.0
Crop lifters	38/34	626 299.1	626 299.1
Table extention floor kit - Canola	1	358 443.0	358 435.0
Table extention			
PTO drive shaft - Canola setup	2	521 288.1	521 288.1

		VARIO 1200 53300011- 53399999	VARIO 1050 53300011- 53399999
Vertical Side Knife	Quantity		
Complete side knife kit only			
Right	1	523 801.0	523 801.0
Left	1	523 804.0	523 804.0
Canola kit w/ Left knife 003 0220		523 803.0	523 803.0
Canola kit w/ Right knife 003 0301 / 003 3010		523 800.2	523 806.2
Knife section	36	616 109.0	616 109.0
Countersunk rivet	72	237 662.0	237 662.0
Complete replacement knife	2	616 106.0	616 106.0
Knife guide - upper/lower	4	616 105.0	616 105.0

Reel			
Reel tine kit		CL99995000	CL99995000
5 tines with hardware			
Outer bearing ring - reel spider		359 910.2	359 910.2
Inner bearing ring - reel spider		359 911.2	359 911.2
Bearing bushing - reel spider		359 912.3	359 912.3

Auger			
Auger finger kit		CL99995010	CL99995010
5 auger fingers, guides with hardware			
Speed reduction kit		521 824.0	521 824.0
2 different gears			

Rakeup/SwathMaster

P516/P514



		P516 43301011- 43399999	P514 43301011- 43399999
SwathMaster			
	Quantity		
Poly tines kit		CL99995230	CL99995230
Tines with hardware			
Steel tines	364/322	561 362.0	561 362.0
Tine support		561 234.0	561 234.0
Front conveyor belt without tines	9/8	561 361.0	561 361.0
Front conveyor belt with tines	9/8	561 363.0	561 363.0
Splice clamping kit	18/16	CL99995240	CL99995240
Profile with hardware			
Rear conveyor belt	9/8	666 289.0	666 289.0
RakeUp			
Poly tines	192/216	666 257.0	666 257.0
Steel tines	192/216	561 233.0	561 233.0
Tine support		561 234.0	561 234.0
Rear conveyor belt	9/8	666 289.0	666 289.0
Splice clamping kit	9/8	CL99995240	CL99995240
Profile with hardware			
Auger			
Finger kit		CL99995190	CL99995190
5 auger fingers, guides with hardware			

CLAAS Corn Headers



	12-22 / 12-22c	18-20 / 18-20c	12-20 / 12-20c	16-30	12-30 / 12/30c	8-30 / 8-30c	6-30
Kits							
Row Unit Knife Replacement Kit per row - Nonchop Row knives, stripper knives	CL99995250	CL99995250	CL99995250	CL99995250	CL99995250	CL99995250	CL99995250
Row Unit Knife Replacement Kit per row - Chopping Row knives, stripper knives	CL99995260	CL99995260	CL99995260	-	CL99995260	CL99995260	-
Row Unit Gathering Chain Kit - per row Gathering chains, front sprocket assembly	CL99995270	CL99995270	CL99995270	CL99995280	CL99995280	CL99995280	CL99995280
Chopping Knives Replacement Kit - per row Gathering chains, front sprocket assembly	CL99995350	CL99995350	CL99995350	-	CL99995290	CL99995290	-
Complete Row Unit Repair Kit - Nonchop All knives, deck plates, strippers, chains, front sprocket, earsavers	CL99995380	CL99995380	CL99995380	CL99995370	CL99995370	CL99995370	CL99995370
Complete Row Unit Repair Kit - Chopping All knives, deck plates, strippers, chains, front sprocket, earsavers	CL99995410	CL99995400	CL99995400	CL99995390	CL99995390	CL99995390	-
Individual Parts – Drives							
Auger drive chain - Nonchop	-	-	-	976 956.0	560 523.0	560 523.0	560 523.0
Auger drive chain - Chopping	-	-	-	-	560 522.0	560 522.0	-
Row unit slip clutch - Complete	933 956.1	933 956.1	933 956.1	933 956.1	933 956.1	933 956.1	933 956.1
Row Unit Parts							
Knife roller nonchop - Left - 450mm	935 128.1	935 128.1	935 128.1	935 128.1	935 128.1	935 128.1	935 128.1
Knife roller nonchop - Right - 450mm	935 127.1	935 127.1	935 127.1	935 127.1	935 127.1	935 127.1	935 127.1
Knife roller chopping - Left - 400mm	560 437.0	560 437.0	560 437.0	560 437.0	560 437.0	560 437.0	-
Knife roller chopping - Right - 400mm	560 436.0	560 436.0	560 436.0	560 436.0	560 436.0	560 436.0	-
Snapping roller - Left	935 725.0	935 725.0	935 725.0	935 725.0	935 725.0	935 725.0	935 725.0
Snapping roller - Right	935 724.0	935 724.0	935 724.0	935 724.0	935 724.0	935 724.0	935 724.0
Ear saver - individual	-	-	-	995 749.1	995 749.1	995 749.1	995 749.1
Ear saver kit - 1 row	527 611.0	527 610.0	527 610.0	-	-	-	-
Sunflower kits - per row	CL05006500	CL05006500	CL05006500	CL05006500	CL05006500	CL05006500	CL05006500
Tire/Track Protection							
MAX STOMPER kit	527 084.0	527 084.0	527 084.0	527 084.0	527 084.0	527 084.0	527 084.0
2 complete assemblies, 1 kit is required for 30 inch, 2 kits required for 20/22 inch							
1 Individual MAX STOMPER complete assembly	527 098.0	527 098.0	527 098.0	527 098.0	527 098.0	527 098.0	527 098.0

Capello Corn Headers

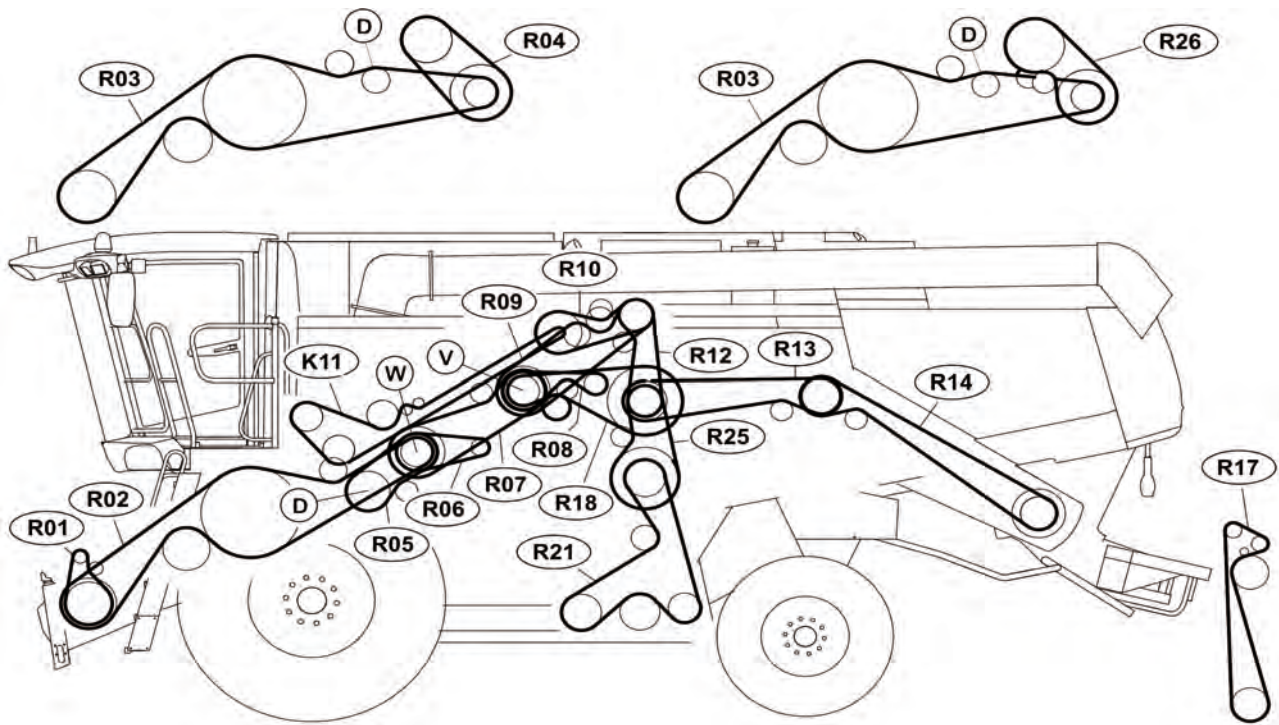


	18-22c 18-22	16-22c 16-22	16-20c 16-20	12-30fc 12-30f	8-30fc 8-30f	12-38c 12-38
Kits						
In cab header folding switch	-	-	-	558 016.0	558 016.0	-
End divider auger kit	CLAUGK1822	CLAUGK1622	CLAUGK1620	CLAUGK1230	CLAUGK0830	CLAUGK1238
Row Unit Knife Replacement Kit per row - Nonchop / Chop Row knives, stripper knives	CL99995250	CL99995250	CL99995250	CL99995250	CL99995250	CL99995250
Individual Parts – Drives						
Row unit slip clutch - Complete	933 956.1	933 956.1	933 956.1	933 956.1	933 956.1	933 956.1
Row Unit Parts						
Knife roller nonchop - Left - 450mm	935 128.0	935 128.0	935 128.0	935 128.0	935 128.0	935 128.0
Knife roller nonchop - Right - 450mm	935 127.0	935 127.0	935 127.0	935 127.0	935 127.0	935 127.0
Snapping roller - Left	935 725.0	935 725.0	935 725.0	935 725.0	935 725.0	935 725.0
Snapping roller - Right	935 724.0	935 724.0	935 724.0	935 724.0	935 724.0	935 724.0
Sunflower kits - per row	CL05006500	CL05006500	CL05006500	CL05006500	CL05006500	CL05006500
Tire/Track Protection						
MAX STOMPER kit 2 complete assemblies, 1 kit is required for 30 inch, 2 kits required for 20/22 inch	527 084.0	527 084.0	527 084.0	-	-	527 084.0
1 Individual MAX STOMPER complete assembly	527 098.0	527 098.0	527 098.0	CLMK000071	CLMK000071	527 098.0

Machine Types	770 / 770 TERRA TRAC C49	760 / 760 TERRA TRAC C49	760 / 760 TERRA TRAC C49	750 / 750 TERRA TRAC C48	750 / 750 TERRA TRAC C48
Engine					
Engine type	OM 502 TIER 3	CAT C13 TIER 3	CAT C13 TIER 4i	CAT C13 TIER 3	CAT C13 TIER 4i
Filling quantity	38 liters	34 liters	34 liters	34 liters	34 liters
CLAAS engine oil	AGRIMOT ULTRATEC 10W-40 (semi-synthetic)	AGRIMOT SDX 15W-40	AGRIMOT SDX 15W-40	AGRIMOT SDX 15W-40	AGRIMOT SDX 15W-40
CLAAS engine oil filter	068 710.1	798 303.0	798 303.0	798 303.0	798 303.0
Changing interval	250 hours/annually	500 hours/annually	500 hours/annually	500 hours/annually	500 hours/annually
Replacment Filters					
Primary fuel filter	068 709.0	363 204.0	799 208.0*	363 204.0	799 208.0*
Fuel filter - Auxiliary tank	783 662.0	783 662.0	783 662.0	783 662.0	783 662.0
Fuel filter (hand pump)	077 445.0	-	-	-	-
Water separator	796 213.0	796 213.0	799 209.0	796 213.0	799 209.0
Air filter - primary	077 367.1	077 367.1	077 367.1	077 367.1	077 367.1
Inner safety filter	077 382.1	077 382.1	077 382.1	077 382.1	077 382.1
Engine exhaust cooler filter	071 242.3	-	-	-	-
Changing interval	500 hours/annually	500 hours/annually	500 hours/annually	500 hours/annually	500 hours/annually
Hydraulic System					
Filling quantity (oil change)	40 liters	40 liters	40 liters	40 liters	40 liters
CLAAS hydraulic oil	AGRHYD HVLDP 46	AGRHYD HVLDP 46	AGRHYD HVLDP 46	AGRHYD HVLDP 46	AGRHYD HVLDP 46
Filter - primary on tank	510 054.1	510 054.1	510 054.1	510 054.1	510 054.1
Filter - return on tank	510 018.2	510 018.2	510 018.2	510 018.2	510 018.2
Changing interval	1000 hours/annually	1000 hours/ annually	1000 hours/annually	1000 hours/annually	1000 hours/annually
Gearboxes					
Transfer gearbox	4.5 liters	4.5 liters	4.5 liters	4.5 liters	4.5 liters
Tranfer gearbox oil	AGRISHIFT SYN FE 75W-90	AGRISHIFT SYN FE 75W-90	AGRISHIFT SYN FE 75W-90	AGRISHIFT SYN FE 75W-90	AGRISHIFT SYN FE 75W-90
Transmission	17 liters Wheeled 15 liters TT	17 liters Wheeled 15 liters TT	17 liters Wheeled 15 liters TT	11.6 liters Wheeled 9.7 liters TT 12 liter 25 mps TT	11.6 liters Wheeled 9.7 liters TT 12 liter 25 mps TT
Final drive	7.5 liters	7.5 liters	9.5 liters	9.5 liters	9.5 liters
Threshing cylinder gearbox	2.5 liters	2.5 liters	2.5 liters	2.5 liters	2.5 liters
Rotor gearbox	1.4 liters (each)	1.4 liters (each)	1.4 liters (each)	1.4 liters (each)	1.4 liters (each)
Unloading auger gearbox	1.35 liters	1.35 liters	1.35 liters	1.35 liters	1.35 liters
CLAAS gearbox oil	AGRISHIFT MT 80W-90	AGRISHIFT MT 80W-90	AGRISHIFT MT 80W-90	AGRISHIFT MT 80W-90	AGRISHIFT MT 80W-90
Cooling System					
Filling quantity (oil change)	64 liters	45 liters	45 liters	45 liters	45 liters
Antifreeze	AGRI-COOL Premix antifreeze	AGRI-COOL Premix antifreeze	AGRI-COOL Premix antifreeze	AGRI-COOL Premix antifreeze	AGRI-COOL Premix antifreeze
Changing interval	5 years	3000 hours or 2 years	3000 hours or 2 years	3000 hours or 2 years	3000 hours or 2 years
Points of lubrication Lincoln Lube	CLAAS Agrigrease EP CLAAS Agrigrease EP2	CLAAS Agrigrease EP CLAAS Agrigrease EP2	CLAAS Agrigrease EP CLAAS Agrigrease EP2	CLAAS Agrigrease EP CLAAS Agrigrease EP2	CLAAS Agrigrease EP CLAAS Agrigrease EP2
CLAAS TERRA TRAC					
Front guide wheel hub	.5 liters	.5 liters	.5 liters	.5 liters	.5 liters
Middle support wheel hub	.25 liters	.25 liters	.25 liters	.25 liters	.25 liters
Drive wheel transmission	31 liters Gen 3 TT	31 liters Gen 3 TT	31 liters Gen 3 TT	25 liters Gen 2 TT 31 liters Gen 3 TT	25 liters Gen 2 TT 31 liters Gen 3 TT
CLAAS TERRA TRAC oil	AGRISHIFT MT 80W-90	AGRISHIFT MT 80W-90	AGRISHIFT MT 80W-90	AGRISHIFT MT 80W-90	AGRISHIFT MT 80W-90
Cab					
Air filter	559 646.0	559 646.0	559 646.0	559 646.0	559 646.0
Heat filter	559 308.0	559 308.0	559 308.0	559 308.0	559 308.0
Changing interval	500 hours/annually	500 hours/annually	500 hours/annually	500 hours/annually	500 hours/annually
	700 Series	670 Walker	MAXFLO Headers	VARIO (side knife)	
Hydraulic fluid tank filter - primary	510 054.1	510 054.1	744 256.0	679 409.0	
Hydraulic fluid tank filter - return	510 018.2	510 018.2	-	-	

*May require more than one

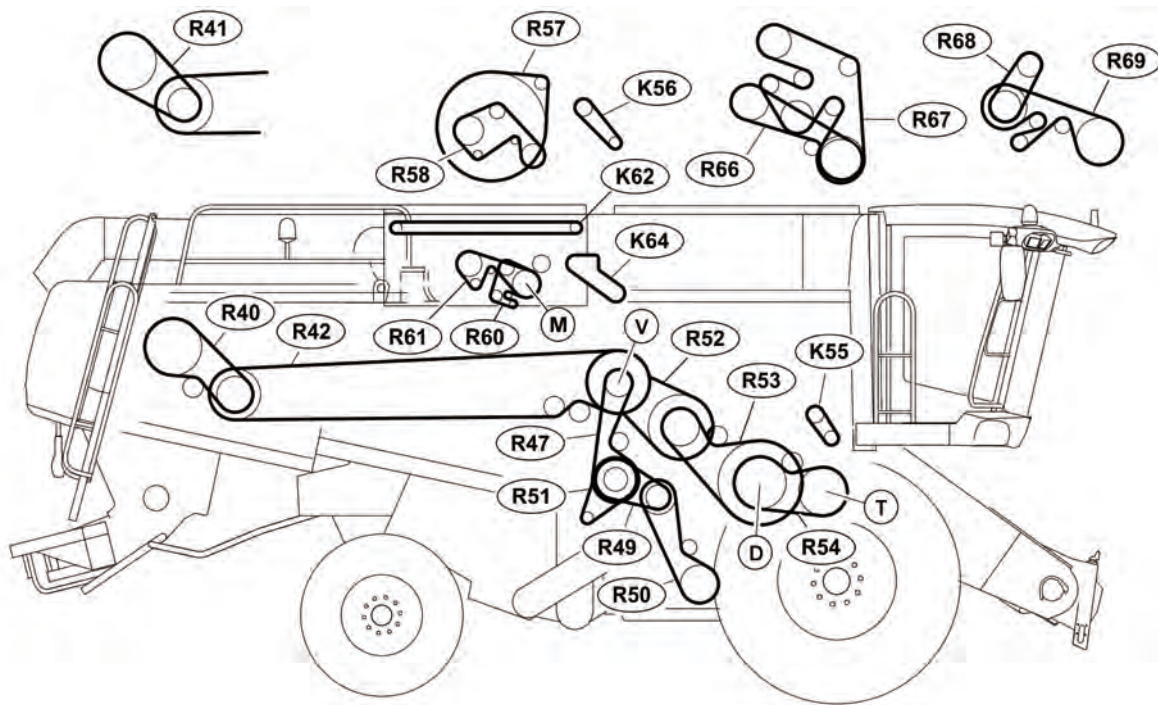
740 / 740 TERRA TRAC C48	740 / 740 TEERA TRAC C48	730 C48	730 C48	670 C44	670 C44
CAT C9 TIER 3	CAT C9.3 TIER 4i	CAT C9 TIER 3	CAT C9.3 TIER 4i	CAT C9 TIER 3	CAT C9.3 TIER 4i
32 liters	32 liters	32 liters	32 liters	32 liters	32 liters
AGRIMOT SDX 15W-40	AGRIMOT SDX 15W-40	AGRIMOT SDX 15W-40	AGRIMOT SDX 15W-40	AGRIMOT SDX 15W-40	AGRIMOT SDX 15W-40
798 303.0	798 303.0	798 303.0	798 303.0	798 303.0	798 303.0
500 hours/annually	500 hours/annually	500 hours/annually	500 hours/annually	500 hours/annually	500 hours/annually
363 204.0	799 208.0*	363 204.0	799 208.0*	363 204.0	799 208.0*
783 662.0	783 662.0	783 662.0	783 662.0	-	-
-	-	-	-	-	-
796 213.0	799 209.0	796 213.0	799 209.0	796 213.0	799 209.0
077 367.1	077 367.1	077 367.1	077 367.1	077 367.1	077 367.1
077 382.1	077 382.1	077 382.1	077 382.1	077 382.1	077 382.1
-	-	-	-	-	-
500 hours/annually	500 hours/annually	500 hours/annually	500 hours/annually	500 hours/annually	500 hours/annually
40 liters	40 liters	40 liters	40 liters	40 liters	40 liters
AGRIHYD HVLPD 46	AGRIHYD HVLPD 46	AGRIHYD HVLPD 46	AGRIHYD HVLPD 46	AGRIHYD HVLPD 46	AGRIHYD HVLPD 46
510 054.1	510 054.1	510 054.1	510 054.1	510 054.1	510 054.1
510 018.2	510 018.2	510 018.2	510 018.2	510 018.2	510 018.2
1000 hours/annually	1000 hours/annually	1000 hours/annually	1000 hours/annually	1000 hours/annually	1000 hours/annually
4.5 liters	4.5 liters	4.5 liters	4.5 liters	4.5 liters	4.5 liters
AGRISHIFT SYN FE 75W-90	AGRISHIFT SYN FE 75W-90	AGRISHIFT SYN FE 75W-90	AGRISHIFT SYN FE 75W-90	AGRISHIFT SYN FE 75W-90	AGRISHIFT SYN FE 75W-90
11.6 liters Wheeled 9.7 liters TT	11.6 liters Wheeled 9.7 liters TT	11.6 liters	11.6 liters	11.6 liters	11.6 liters
9.5 liters	9.5 liters	9.5 liters	9.5 liters	9.5 liters	9.5 liters
2.5 liters	2.5 liters	2.5 liters	2.5 liters	2.5 liters	2.5 liters
1.4 liters (each)	1.4 liters (each)	1.4 liters (each)	1.4 liters (each)	-	-
1.35 liters	1.35 liters	1.35 liters	1.35 liters	-	-
AGRISHIFT MT 80W-90	AGRISHIFT MT 80W-90	AGRISHIFT MT 80W-90	AGRISHIFT MT 80W-90	AGRISHIFT MT 80W-90	AGRISHIFT MT 80W-90
40 liters	40 liters	40 liters	40 liters	40 liters	40 liters
AGRI-COOL Premix antifreeze	AGRI-COOL Premix antifreeze	AGRI-COOL Premix antifreeze	AGRI-COOL Premix antifreeze	AGRI-COOL Premix antifreeze	AGRI-COOL Premix antifreeze
3000 hours or 2 years	3000 hours or 2 years	3000 hours or 2 years	3000 hours or 2 years	3000 hours or 2 years	3000 hours or 2 years
CLAAS Agrigrease EP CLAAS Agrigrease EP2	CLAAS Agrigrease EP CLAAS Agrigrease EP2	CLAAS Agrigrease EP CLAAS Agrigrease EP2	CLAAS Agrigrease EP CLAAS Agrigrease EP2	CLAAS Agrigrease EP CLAAS Agrigrease EP2	CLAAS Agrigrease EP CLAAS Agrigrease EP2
.5 liters	.5 liters	-	-	-	-
.25 liters	.25 liters	-	-	-	-
25 liters Gen 2 TT	25 liters Gen 2 TT	-	-	-	-
AGRISHIFT MT 80W-90	AGRISHIFT MT 80W-90	-	-	-	-
559 646.0	559 646.0	559 646.0	559 646.0	559 646.0	559 646.0
559 308.0	559 308.0	559 308.0	559 308.0	559 308.0	559 308.0
500 hours/annually	500 hours/annually	500 hours/annually	500 hours/annually	500 hours/annually	500 hours/annually



ID #	Description		770 / 770 TERRA TRAC	760 / 760 TERRA TRAC	750 / 750 TERRA TRAC	740 / 740 TERRA TRAC	730
R01	Dust suction fan STD feederhouse	B12 0020	765 985.0	765 985.0	765 985.0	765 985.0	765 985.0
	Dust suction fan HP feederhouse	B12 0030	661 244.0	661 244.0	661 244.0	661 244.0	661 244.0
R02	Header drive 2nd stage - fixed speed	B06 0010	628 579.1	628 579.1	667 454.1	667 454.1	667 454.1
R03	Header drive 3rd stage - variable speed drive	B06 0020	628 779.1	628 779.1	667 551.2	667 551.2	667 551.2
	Header drive 3rd stage - HD variable speed drive	B06 0025	-	-	628 779.1	628 779.1	-
	Header drive 3rd stage - 2 speed step drive	B06 0030	628 779.1	628 779.1	667 551.2	-	-
R04	Header drive 2nd stage - variable speed drive	B06 0020	660 568.0	660 568.0	667 530.1	667 530.1	667 530.1
	Header drive 2nd stage -HD variable speed drive	B06 0025	-	-	660 833.0	660 833.0	-
R05	Impeller drive		667 249.0	667 249.0	667 249.0	667 249.0	667 249.0
R06	Reel hydraulic pump drive		829 094.0	829 094.0	829 094.0	829 094.0	829 094.0
R07	Header drive 1st stage		644 892.0	644 892.0	644 892.0	644 892.0	644 892.0
R08	Straw spreader hydraulic pump drive	G06 0040	746 508.3	746 508.3	746 508.3	746 508.3	746 508.3
	TURBO active tailboard hydraulic pump drive	G06 0020	746 508.3	746 508.3	746 508.3	746 508.3	746 508.3
	PRO active tailboard hydraulic pump drive	G06 0060	746 508.3	746 508.3	746 508.3	746 508.3	746 508.3
R09	Threshing mechanism drive - Tier 3 engines		644 884.0	644 884.0	660 554.0	352 403.0	352 403.0
	Threshing mechanism drive - Tier 4i engines		-	644 884.0	660 554.0	660 314.1	660 314.1
R10	Grain tank unloading 1st stage - Tier 3 engines	F08 0020	570 195.2	570 195.2	660 762.1	570 195.2	570 195.2
	Grain tank unloading 1st stage - Tier 4i engines	F08 0020	-	660 762.1	660 762.1	660 762.1	660 762.1
	Grain tank unloading 1st stage - Tier 3 engines	F08 0010	667 981.2	667 981.2	660 361.0	667 981.2	667 981.2
	Grain tank unloading 1st stage - Tier 4i engines	F08 0010	-	660 361.0	660 361.0	660 361.0	660 361.0
K11	Grain tank unloading 2nd stage - 3.3bps	F08 0020	507 707.0	507 707.0	507 707.0	507 707.0	507 707.0
	Grain tank unloading 2nd stage - 2.8bps	F08 0010	755 508.0	755 508.0	755 508.0	755 508.0	755 508.0
R12	Straw chopper drive 1st stage -Tier 3 engines		644 885.0	644 885.0	660 315.0	667 958.3	667 958.3
	Straw chopper drive 1st stage -Tier 4i engines		-	670 751.0	660 315.0	660 315.0	660 315.0
R13	Straw chopper drive 2nd stage - Turbo	G02 0064	644 889.0	644 889.0	644 889.0	644 889.0	644 889.0
	Straw chopper drive 2nd stage - Pro	G02 0065	644 889.0	644 889.0	644 889.0	644 889.0	644 889.0
	Straw chopper drive 2nd stage - MAV	G02 0120	644 890.0	644 890.0	644 890.0	644 890.0	644 890.0
R14	Straw chopper drive 3rd stage - Turbo	G02 0064	670 724.0	670 724.0	670 724.0	670 724.0	670 724.0
	Straw chopper drive 3rd stage - Pro	G02 0065	628 978.0	628 978.0	628 978.0	628 978.0	628 978.0
	Straw chopper drive 3rd stage - MAV	G02 0120	355 658.0	355 658.0	355 658.0	355 658.0	355 658.0
R17	Straw spreader drive	G02 0030	539 443.0	539 443.0	539 443.0	539 443.0	539 443.0
R18	Cleaning Shoe drive 1st stage		644 209.2	644 209.2	644 209.2	644 209.2	644 209.2
R21	Cleaning Shoe drive 3rd stage		756 466.0	756 466.0	756 466.0	756 466.0	756 466.0
R25	Cleaning Shoe drive 2nd stage		644 902.0	644 902.0	644 902.0	644 902.0	644 902.0
R26	Header step drive 2nd stage	B06 0030	980 851.0	980 851.0	980 851.0	980 851.0	980 851.0

D = Threshing cylinder, K = Drive chains, R = Drive belts, V = Accelerator, W = Impeller

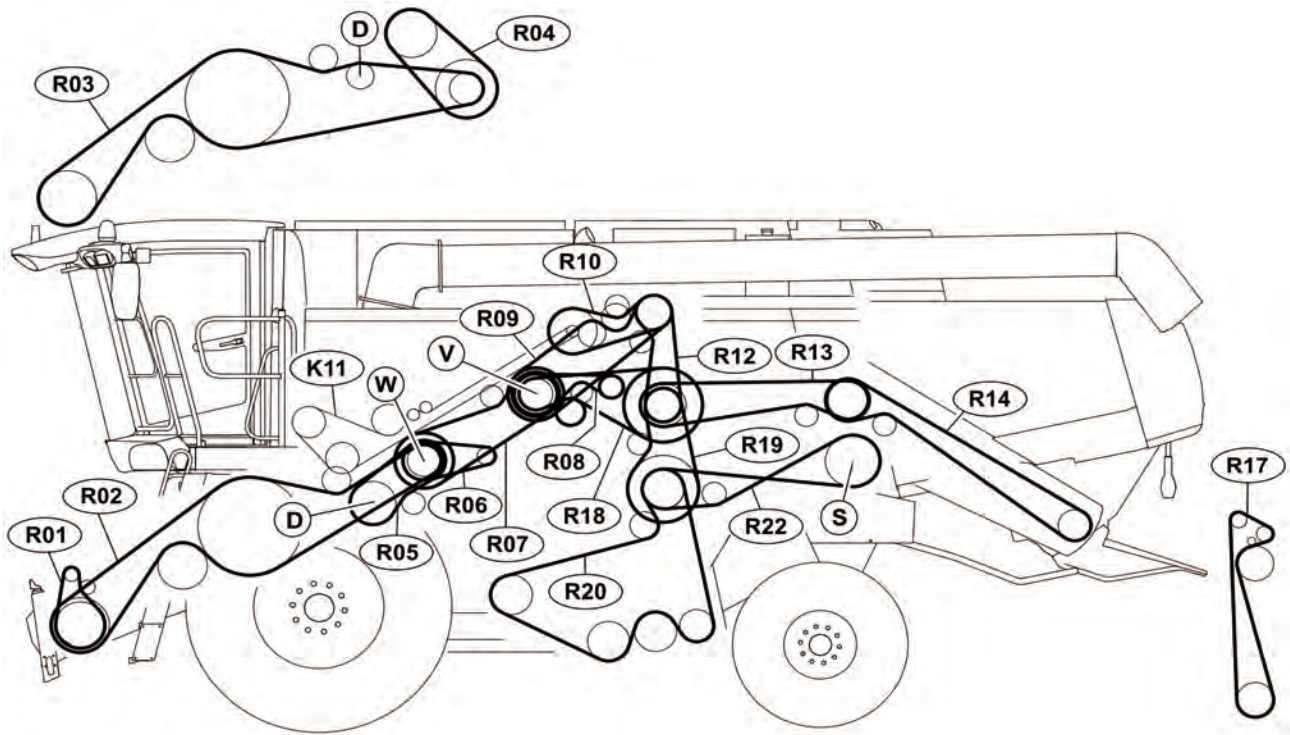
*Not all belts / chain maybe displayed. Please contact dealer for assistance.



ID #	Description		770 / 770 TERRA TRAC	760 / 760 TERRA TRAC	750 / 750 TERRA TRAC	740 / 740 TERRA TRAC	730
R40	Rotor drive 2nd stage - 3 speed step drive	D06 0030	628 792.0	628 792.0	628 792.0	628 792.0	628 792.0
R41	Rotor drive 2nd stage - Variable speed drive	D06 0020	744 965.0	744 965.0	744 965.0	744 965.0	744 965.0
R42	Rotor drive 1st stage - Variable speed drive	D06 0020	644 961.0	644 961.0	644 961.0	644 961.0	644 961.0
	Rotor drive 1st stage - 3 speed step drive	D06 0030	749 886.1	749 886.1	749 886.1	749 886.1	749 886.1
R47	Cleaning fan drive 1st stage		667 957.0	667 957.0	660 488.0	660 488.0	660 488.0
R49	Cleaning fan drive 2nd stage - Variable speed		628 847.1	628 847.1	660 423.0	660 423.0	660 423.0
R50	Cleaning fan drive 3rd stage		744 785.0	744 785.0	660 566.0	660 566.0	660 566.0
R51	Radiator chaff extraction blower drive - Tier 3		667 367.0	667 367.0	660 961.0	056 961.0	056 961.0
	Radiator chaff extraction blower drive - Tier 4i		-	667 367.0	660 961.0	660 961.0	660 961.0
R52	Threshing drive 1st stage - Variable speed drive		744 965.0	744 965.0	667 248.0	667 248.0	667 248.0
R53	Threshing cylinder drive - single range variable	C04 0030	644 965.0	644 965.0	176 442.1	176 442.1	176 442.1
	Threshing cylinder drive - dual range variable	C04 0040	644 965.0	644 965.0	176 442.1	176 442.1	176 442.1
R54	APS cylinder drive		667 251.1	667 251.1	667 251.1	677 251.1	677 251.1
K55	Tailings auger drive		642 492.0	642 492.0	642 492.0	642 492.0	642 492.0
K62	CLEAN SWEEP extraction arm - Tier 3		796 567.0	796 567.0	-	-	-
	CLEAN SWEEP extraction arm - Tier 4i		-	796 567.0	796 567.0	796 567.0	796 567.0
K64	Grain tank bubble up auger drive		795 266.0	795 266.0	795 266.0	795 266.0	795 266.0
	Clean grain elevator chain - Complete		757 209.2	757 209.2	757 209.2	757 209.2	757 209.2
	Returns elevator chain - Complete		795 371.0	795 371.0	795 371.0	795 371.0	795 371.0
	Feederhouse chain - Complete		517 934.0	517 934.0	518 187.0	518 187.0	518 187.0

D = Threshing cylinder, K = Drive chains, M = Engine, R = Drive belts, T = APS cylinder, V = Main intermediate drive shaft

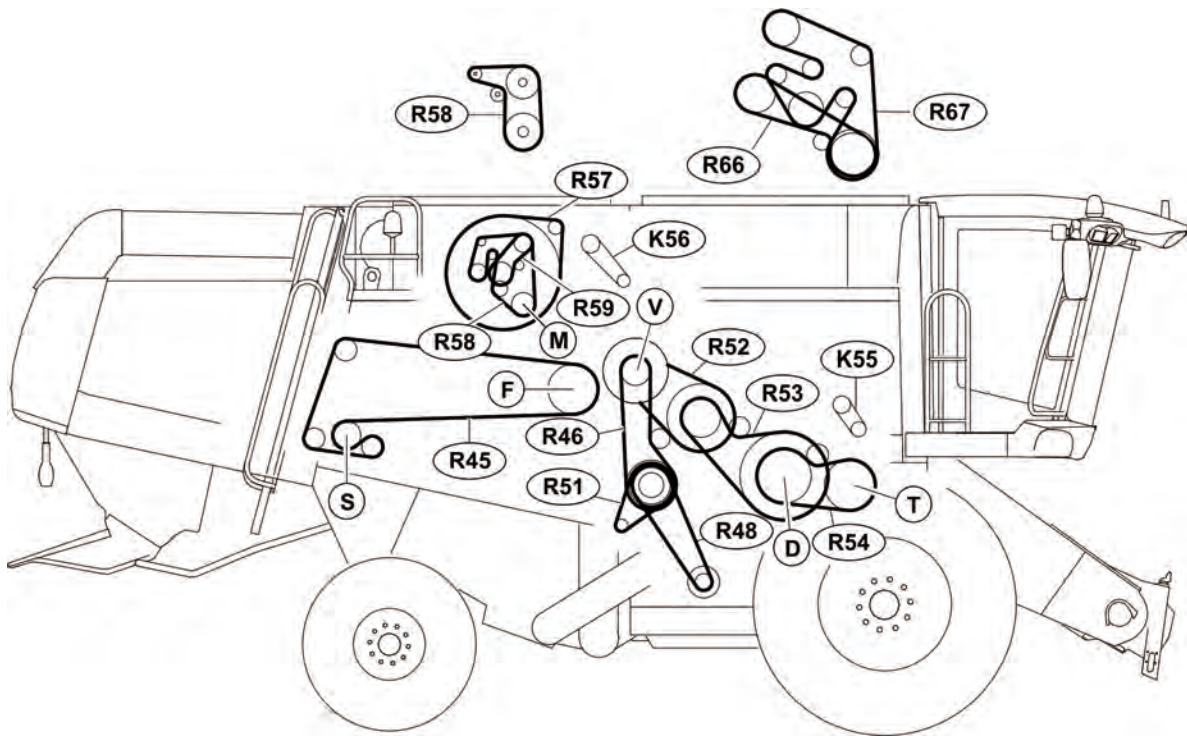
*Not all belts / chain maybe displayed. Please contact dealer for assistance.



ID #	Description		670	670
			C4400011-C4900042	C4400043-C4499999
R01	Dust suction fan STD feederhouse	B12 0020	765 985.0	765 985.0
	Dust suction fan HP feederhouse	B12 0030	661 244.0	661 244.0
R02	Header drive 2nd stage - fixed speed	B06 0010	667 454.1	667 454.1
R03	Header drive 3rd stage - variable speed drive	B06 0020	667 551.0	667 551.0
R04	Header drive 2nd stage - variable speed drive	B06 0020	667 530.1	667 530.1
R05	Impeller drive		667 249.0	667 249.0
R06	Reel hydraulic pump drive		829 094.0	829 094.0
R07	Header drive 1st stage		664 892.0	664 892.0
R08	TURBO active tailboard hydraulic pump drive	G06 0020	746 508.3	746 508.3
	PRO active tailboard hydraulic pump drive	G06 0060	746 508.3	746 508.3
R09	Threshing mechanism drive - Tier 3 engines		352 403.0	352 403.0
	Threshing mechanism drive - Tier 4i engines		-	660 315.0
R10	Grain tank unloading 1st stage - Tier 3 engines	F08 0020	667 250.0	667 250.0
	Grain tank unloading 1st stage - Tier 4i engines	F08 0020	-	660 316.0
K11	Grain tank unloading 2nd stage - 2.8bps		755 508.0	755 508.0
R12	Straw chopper drive 1st stage -Tier 3 engines		667 958.3	667 958.3
	Straw chopper drive 1st stage -Tier 4i engines		-	660 315.0
R13	Straw chopper drive 2nd stage - Turbo	G02 0064	644 889.0	644 889.0
	Straw chopper drive 2nd stage - Pro	G02 0065	061 700.1	061 700.1
	Straw chopper drive 2nd stage - MAV	G02 0120	644 890.0	644 890.0
R14	Straw chopper drive 3rd stage - Turbo	G02 0064	670 723.0	670 723.0
	Straw chopper drive 3rd stage - Pro	G02 0065	628 888.0	628 888.0
	Straw chopper drive 3rd stage - MAV	G02 0120	628 888.0	628 888.0
R18	Cleaning Shoe drive 1st stage		644 209.2	644 209.2
R19	Cleaning Shoe drive 2nd stage		667 252.0	667 252.0
R20	Cleaning Shoe drive 3rd stage		644 866.0	644 866.0
R22	Walker shaker drive 2nd stage		670 477.0	670 796.0

D = Threshing cylinder, K = Drive chains, R = Drive belts, S = Walker Drive, V = MSS Drum, W = Impeller

*Not all belts / chain maybe displayed. Please contact dealer for assistance.



ID #	Description	670	670
		C4400011-C4900042	C4400043-C4499999
R45	MSS Drum Drive	628 991.0	628 991.0
R46	Cleaning fan drive 1st stage	746 506.0	746 506.0
R48	Cleaning fan drive 2nd stage - Variable speed	667 457.0	667 457.0
R51	Radiator chaff extraction blower drive	664 781.0	664 781.0
R52	Threshing drive 1st stage - Variable speed drive	667 248.0	667 248.0
R53	Threshing cylinder drive - single range variable C04 0030	176 442.1	176 442.1
	Threshing cylinder drive - dual range variable C04 0040	176 442.1	176 442.1
R54	APS cylinder drive	667 251.1	667 251.1
K55	Tailings auger drive	642 492.0	642 492.0
K56	Grain tank bubble up auger drive	754 315.1	754 315.1
R57	Rotary screen drive	545 689.0	545 689.0
	Clean grain elevator chain - Complete	757 220.0	757 220.0
	Returns elevator chain - Complete	735 367.0	735 367.0
	Feederhouse chain - Complete	517 934.0	517 934.0

D = Threshing cylinder, F = MSS drum, K = Drive chains, M = Engine, R = Drive belts, S = Walker drive shaft, T = APS cylinder, V = Main intermediate drive shaft

*Not all belts / chain maybe displayed. Please contact dealer for assistance.

CLAAS REMAN: Cost-effective alternative to new parts



High-quality materials and a great deal of time and effort go into every CLAAS part. For this reason, CLAAS takes back used parts, refurbishes them in an industrial process and remarkets them as a cost-effective alternative to new parts, under the name CLAAS REMAN.

When it comes to reconditioning, we place great emphasis on value and quality. CLAAS REMAN parts undergo the same tests in technical development as brand-new parts. This guarantees optimal functionality of CLAAS REMAN parts in the field.



CLAAS REMAN parts have many key benefits.

- shorter downtime periods - through replacing entire components, often directly on site
- low prices - through savings on remanufactured parts compared with new parts
- high quality - through factory reconditioning of CLAAS REMAN parts
- technical refinement - through a direct connection to series production
- value retention - through the use of technically new-quality CLAAS REMAN parts
- warranty - CLAAS offers the same 1 year warranty for REMAN as for new parts
- active environmental protection - resources are protected through the reuse of old parts

Product	REMAN Part Number
Starter C49/ 502 engine	0309 031.0
Starter C48/ C44 CAT engine	0309 052.0
Engine 502	1992 155.0

*Please contact dealer for assistance on latest list of REMAN parts.

A harvest ready LEXION in the shed is worth its weight in gold.

Post-harvest inspection.

You expect your LEXION to perform at its peak during harvest. To ensure that your machine works reliably throughout the harvest it's important that regular service and wear parts are replaced. The CLAAS post-harvest inspections gives your dealer a chance to get a detailed inspection of your LEXION allowing early detection of wear and concealed damages – giving you peace of mind that your LEXION will be ready next year when you are.

How you benefit from the post-harvest inspection.

- Detailed, in-depth inspection of current condition of your LEXION by your dealer
- Documentation of CLAAS factory post harvest checklist with detailed service log
- Basis of cost estimate for necessary repairs
- Added assurance with CLAAS MAXI CARE® Service



LEXION
CLAAS Service

MAXI CARE®: Peace of mind



The idea behind CLAAS MAXI CARE® is to offer you maximum operational reliability, combined with maximum cost control. This extended protection program for your LEXION provides you with special coverage that goes beyond the standard 12 month factory warranty. Choose the package that best suits your needs, and lock in a low fixed cost for potential repairs. That way you keep the financial planning of your business under control and won't have to worry about unexpected repair bills.

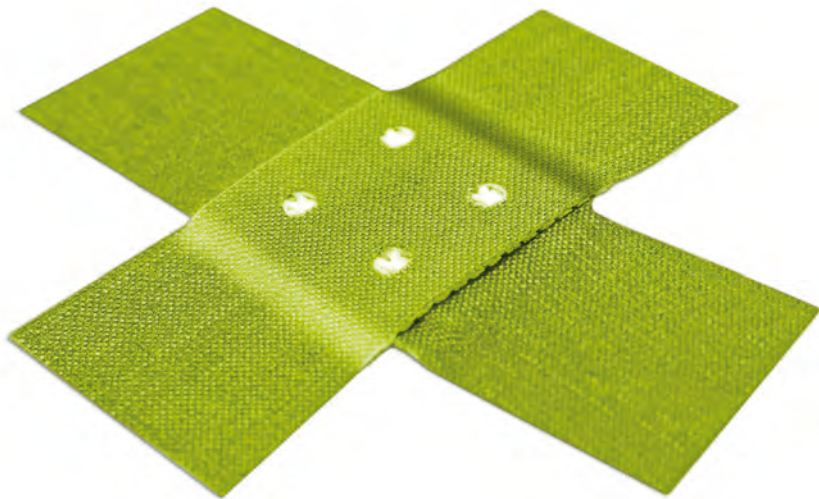
MAXI CARE® offers a range of packages that provides you with service support tailored perfectly to the needs of your business following the standard 12 month factory warranty:

- xtraCARE®: Extended protection program for complete machine protection equivalent to the standard factory warranty coverage
- sysCARE®: Extended protection program for major systems, e.g., electrical, hydraulic, drive, etc.
- driveCARE®: Extended protection program for power train components, e.g., transmissions, hydrostatic drive systems, gearboxes, etc.



How you benefit from MAXI CARE®.

- Flexible scope of extended protection programs (xtraCARE®, sysCARE®, driveCARE®)
- Variable contract terms
- Exclusive use of ORIGINAL CLAAS parts



Ask your LEXION dealer for details of our complete packages.

LEXION
CLAAS Service

CLAAS Manuals: Information is power



	770	760	750	740	730	670	Gen 2 TERRA TRAC	Gen 3 TERRA TRAC	Tier 4i Engines	Chopping Corn Heads	CEMOS DIALOG
OMM											
English	291 111.3	291 111.3	291 111.3	291 111.3	291 111.3	291 111.3	291 403.1	291 406.2	291 400.1	291 582.0	291 234.2
French	291 112.3	291 112.3	291 112.3	291 112.3	291 112.3	291 112.3	291 404.1	291 407.2	291 401.1	-	-
Spanish	291 113.2	291 113.2	291 113.2	291 113.2	291 113.2	291 113.2	291 405.1	291 408.2	291 402.1	-	-
Parts Manuals											
English	291 719.1	291 719.1	291 725.1	291 725.1	291 725.1	291 937.1	-	-	-	-	-
Service Manuals											
Repair	291 102.3	291 102.3	291 102.3	291 102.3	291 102.3	291 102.3	-	-	-	-	-
Tech Systems	291 296.4	291 296.4	291 296.4	291 296.4	291 296.4	291 296.4	-	-	-	-	-
	Corn Head 16 - 30	Corn Head 12 - 30 8 - 30 6 - 30	Corn Head 18 - 20	Corn Head 12 -22	G750	VARIO 900	VARIO 1200 1050	MAXFLO 1200 1050	SwathMaster RackUp	Flex Heads F900 F750	MAXFLEX 1200 1050
OMM											
English	291 582.0	291 582.0	291 582.0	291 582.0	293 119.0	295 267.0	291 448.0	291 173.1	293 796.5	293 115.0	291 450.0
French	-	-	-	-	-	295 268.0	-	-	-	-	-
Spanish	-	-	-	-	-	295 269.0	295 269.0	-	-	-	-
Parts Manuals											
English	293 890.5	298 357.6	291 251.1	-	293 435.5	295 451.3	291 590.2	291 174.2	293 924.7	-	291 308.1



On Your Farm Parts: The parts you need, when you need them

Here's how it works.

1. You and your dealer decide which parts are to be included
2. You place the parts order
3. You use the parts as you need them throughout the harvest season
4. You pay for the parts after the season

It's really that simple!

Pre - harvest	Harvest	Post - harvest
Inspect your machine Place your parts order	Install parts as needed	Pay for your parts

Dealers should consult the latest CLAAS Parts Bulletin for details.

* Available at participating dealers only. Some restrictions or pre-qualifications may apply. Ask your CLAAS dealer for details.

CLAAS Tools: Professional Grade



Hand Wrenches

13 piece combination wrench set	Metric	CLA1203MR
13 piece combination wrench set	SAE	CLA1203SR
14 piece, 12 point combination speed wrench set	Metric	CLA12102MR
14 piece, 12 point combination speed wrench set	SAE	CLA12101SR

Socket Sets

43 piece 1/2 inch drive, 12 point combination socket set	Metric & SAE	CLA4004CR
43 piece 1/2 inch drive, 6 point combination socket set	Metric & SAE	CLA4504CR
11 piece 1/2 inch drive, 6 point impact sockets	Metric	CLA4401MP



CLAAS offers over 2000 professional grade hand tools through our partnership with KING TONY America. All these tools are distributed through the CLAAS Parts System for easy ordering and maximum confidence. See your local CLAAS dealer for details.



Misc Speciality Tools

CLAAS panel wrench	736 429.1
Variator belt removal bolts	236 302.0
Spring tensioner removal nut	249 569.0
Gib key puller - Straight, large	181 832.1
Gib key puller - Straight, small	238 319.1
Gib key puller - Elbow	181 834.1
Concave adjustment tool, 4 mm	174 881.0
Concave adjustment tool, 7 mm	174 880.0
2 - Speed gear box filling chute	669 885.0
Grease Gun with metric tip	177 372.0
Metric grease tip with hose	177 386.0

Electrical

European style single in-cab connector plug	658 230.0
3 pin in-cab connector plug	11382110
Angle sensor readout harness	174 689.0

The new LEXION at a glance

GPS PILOT

Deluxe cab

LASER PILOT

Ultra-narrow divider

Centrally supported reel

Patented material flow

Split knife

MultiCoupler

Reversible side draper belts

Hydrostatic reel drive

Swathing capable

Synchronized transmission drive

AUTO CONTOUR





Power folding grain tank

CEBIS

Mercedes-Benz or Caterpillar engine

ROTO PLUS

PRO CHOP

Chaff blower

4-TRAC

JET STREAM 3-D cleaning system

Returns pan

APS threshing system

Turbine fans

TERRA TRAC

The new LEXION at a glance.

Ordering instructions for CLAAS Dealers

1. Aftersales kits (part numbers beginning with 91 or 92) and local kits (part numbers beginning with "CL") can be ordered through the normal CLAAS spare parts system.
 - a) Pricing for aftersales kits and local kits can be found on the CLAAS Parts Online system. Simply query the part number like any other part and click on the "Bill of Material / Multi-sub" icon to see the total price for all parts included.
2. Prices for aftersales kits will not necessarily be the same as when purchasing factory installed options on the new machines.
3. Longer than normal lead times may apply for some aftersales kit parts due to low sales volumes and special manufacturing requirements.
4. Some aftersales kits may NOT include detailed installation instructions. Please contact your CLAAS Regional Service Manager for installation and operational assistance.
5. Dealer questions about aftersales kit pricing and parts availability should be directed to the CLAAS Parts Department.

